

CYGNAL

Survey of Likely General Election Voters

North Carolina Statewide

Conducted August 13 – 15, 2022

n=615 | $\pm 3.90\%$



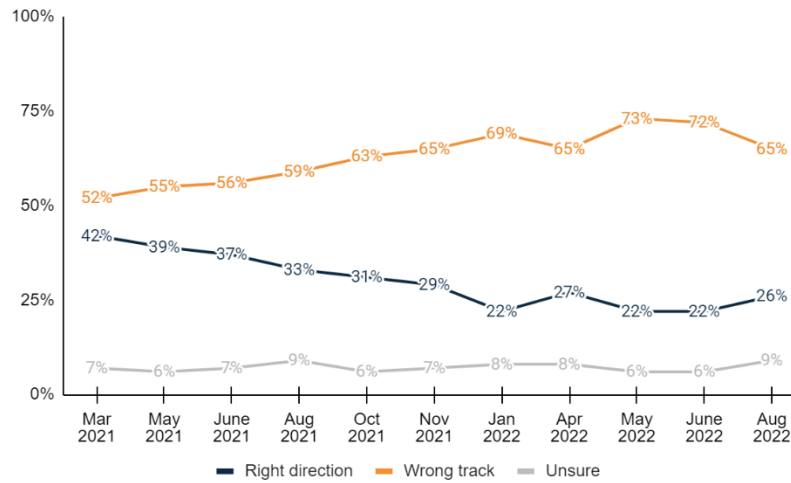
Likelihood to Vote

1. How do you plan to vote in the general election in November for U.S. Senate, Congress and the State Legislature out of the following options?

| | Freq. | % |
|----------------------------------------------|-------------------|---------------------|
| <u>Vote in-person on Election Day</u> | <u>291</u> | <u>47.2%</u> |
| Definitely vote in-person on Election Day | 229 | 37.3% |
| Probably vote in-person on Election Day | 61 | 9.9% |
| <u>Vote absentee by mail</u> | <u>47</u> | <u>7.7%</u> |
| Definitely vote absentee by mail | 32 | 5.2% |
| Probably vote absentee by mail | 15 | 2.5% |
| <u>Vote early in-person</u> | <u>277</u> | <u>45.1%</u> |
| Definitely vote early in-person | 161 | 26.2% |
| Probably vote early in-person | 116 | 18.9% |
| Total | 615 | 100.0% |

RD/WT

2. Generally speaking, would you say things in the United States are headed in the right direction or off on the wrong track?



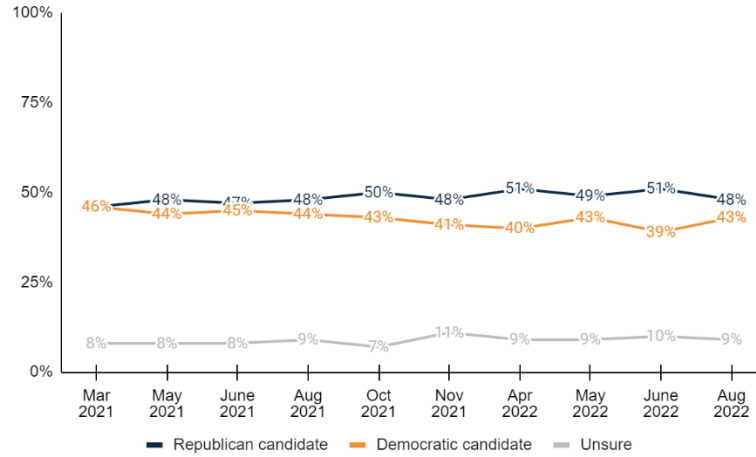
| | Freq. | % | June 2022 | May 2022 |
|--------------------------------|-------------------|---------------------|---------------------|---------------------|
| <u>Right direction</u> | <u>162</u> | <u>26.4%</u> | <u>21.9%</u> | <u>21.5%</u> |
| Definitely the right direction | 44 | 7.2% | 3.1% | 4.1% |
| Mostly the right direction | 118 | 19.2% | 18.8% | 17.4% |
| <u>Wrong track</u> | <u>399</u> | <u>64.8%</u> | <u>71.8%</u> | <u>72.8%</u> |
| Mostly the wrong track | 89 | 14.4% | 16.7% | 16.7% |
| Definitely the wrong track | 310 | 50.4% | 55.1% | 56.0% |
| Unsure | 54 | 8.8% | 6.3% | 5.7% |
| Total | 615 | 100.0% | 100.0% | 100.0% |



Now thinking about the general election in November...

State Generic Ballot

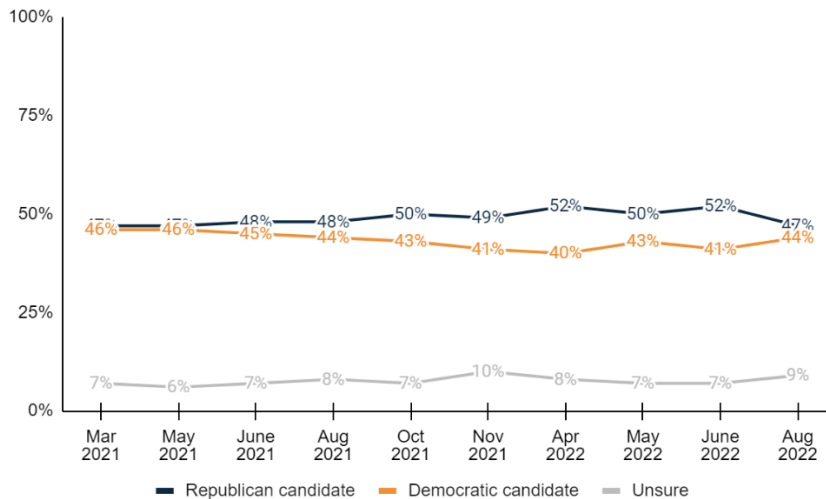
3. If the general election for State Legislature was held today, would you vote for the Republican candidate or the Democratic candidate?



| | Freq. | % | June 2022 | May 2022 |
|-------------------------------------|------------|--------------|--------------|--------------|
| Republican candidate | 295 | 47.9% | 50.7% | 48.5% |
| Definitely the Republican candidate | 260 | 42.3% | 44.8% | 41.8% |
| Probably the Republican candidate | 35 | 5.6% | 5.9% | 6.7% |
| Democratic candidate | 264 | 42.9% | 39.3% | 42.8% |
| Probably the Democratic candidate | 40 | 6.6% | 6.7% | 7.1% |
| Definitely the Democratic candidate | 224 | 36.4% | 32.5% | 35.7% |
| Unsure | 56 | 9.2% | 10.1% | 8.6% |
| Total | 615 | 100.0% | 100.0% | 100.0% |

Congressional Generic Ballot

4. And regardless of how you would vote at the state level, if the general election for U.S. Congress was held today, would you vote for the Republican candidate or the Democratic candidate?



| | Freq. | % | June 2022 | May 2022 |
|-------------------------------------|-------------------|---------------------|---------------------|---------------------|
| <u>Republican candidate</u> | <u>291</u> | <u>47.3%</u> | <u>51.5%</u> | <u>50.0%</u> |
| Definitely the Republican candidate | 255 | 41.5% | 45.8% | 42.6% |
| Probably the Republican candidate | 36 | 5.8% | 5.8% | 7.4% |
| <u>Democratic candidate</u> | <u>271</u> | <u>44.0%</u> | <u>41.0%</u> | <u>42.5%</u> |
| Probably the Democratic candidate | 41 | 6.7% | 7.7% | 6.1% |
| Definitely the Democratic candidate | 229 | 37.3% | 33.4% | 36.4% |
| Unsure | 53 | 8.7% | 7.4% | 7.4% |
| Total | 615 | 100.0% | 100.0% | 100.0% |

Senate Ballot

5. If the general election for U.S. Senate was held today, and you had to make a choice, who would you vote for?

| | Freq. | % | June 2022 | May 2022 |
|-------------------------------------------------|-------------------|---------------------|---------------------|---------------------|
| <u>Republican Ted Budd</u> | <u>260</u> | <u>42.3%</u> | <u>45.0%</u> | <u>43.6%</u> |
| Definitely Republican Ted Budd | 228 | 37.1% | 38.2% | |
| Probably Republican Ted Budd | 32 | 5.2% | 6.8% | |
| <u>Democrat Cheri Beasley</u> | <u>260</u> | <u>42.3%</u> | <u>40.3%</u> | <u>41.8%</u> |
| Probably Democrat Cheri Beasley | 40 | 6.5% | 9.5% | |
| Definitely Democrat Cheri Beasley | 220 | 35.8% | 30.8% | |
| <u>Green Party candidate Matthew Hoh</u> | <u>5</u> | <u>0.8%</u> | <u>0.9%</u> | <u>0.7%</u> |
| <u>Libertarian Shannon Bray</u> | <u>12</u> | <u>1.9%</u> | <u>2.9%</u> | <u>1.9%</u> |
| Undecided | 78 | 12.6% | 11.0% | 12.0% |
| Total | 615 | 100.0% | 100.0% | 100.0% |

As you may know, North Carolina elects its State Supreme Court justices, and two seats are up for election this year.

SC Ballot 1

6. If the general election for North Carolina Supreme Court was held today, and you had to make a choice between the following two candidates, who would you vote for?

| | Freq. | % | June 2022 | May 2022 |
|----------------------------------------|-------------------|---------------------|---------------------|---------------------|
| <u>Republican Richard Dietz</u> | <u>278</u> | <u>45.2%</u> | <u>49.1%</u> | <u>43.6%</u> |
| Definitely Republican Richard Dietz | 226 | 36.8% | 39.2% | 35.7% |
| Probably Republican Richard Dietz | 52 | 8.4% | 9.9% | 8.0% |
| <u>Democrat Lucy Inman</u> | <u>242</u> | <u>39.4%</u> | <u>38.4%</u> | <u>40.3%</u> |
| Probably Democrat Lucy Inman | 46 | 7.5% | 9.8% | 8.9% |
| Definitely Democrat Lucy Inman | 196 | 31.9% | 28.6% | 31.4% |
| Undecided | 95 | 15.4% | 12.5% | 16.1% |
| Total | 615 | 100.0% | 100.0% | 100.0% |



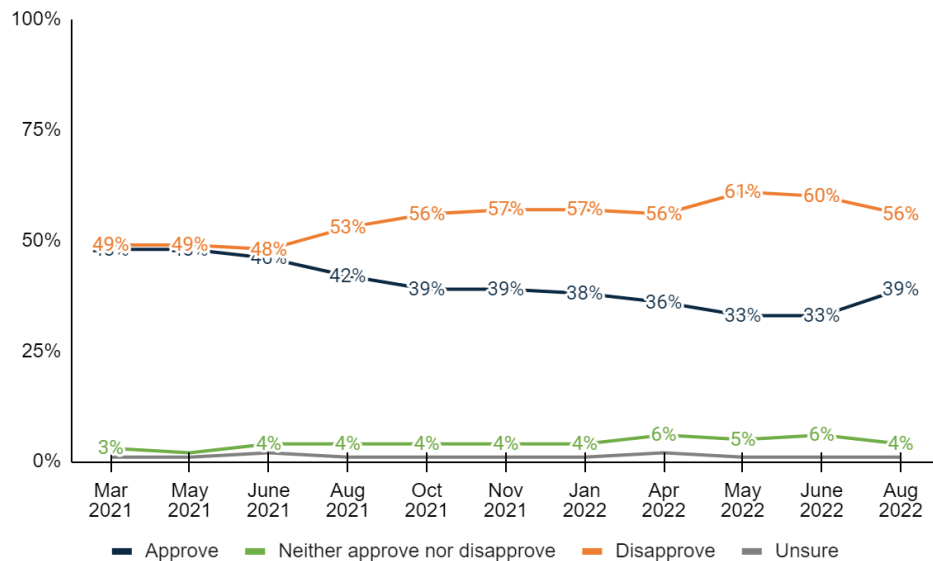
SC Ballot 2

7. And again, if the general election for North Carolina Supreme Court was held today, and you had to make a choice between the following two candidates, who would you vote for?

| | Freq. | % | June 2022 | May 2022 |
|-------------------------------------|-------------------|---------------------|---------------------|---------------------|
| <u>Republican Trey Allen</u> | <u>277</u> | <u>45.1%</u> | <u>48.6%</u> | <u>46.1%</u> |
| Definitely Republican Trey Allen | 228 | 37.1% | 39.2% | 37.5% |
| Probably Republican Trey Allen | 49 | 7.9% | 9.4% | 8.6% |
| <u>Democrat Sam J. Ervin</u> | <u>247</u> | <u>40.1%</u> | <u>39.0%</u> | <u>39.5%</u> |
| Probably Democrat Sam J. Ervin | 54 | 8.8% | 10.0% | 8.8% |
| Definitely Democrat Sam J. Ervin | 193 | 31.4% | 29.0% | 30.7% |
| Undecided | 91 | 14.8% | 12.4% | 14.4% |
| Total | 615 | 100.0% | 100.0% | 100.0% |

Biden JA

8. Do you approve or disapprove the job that Joe Biden is doing as President?

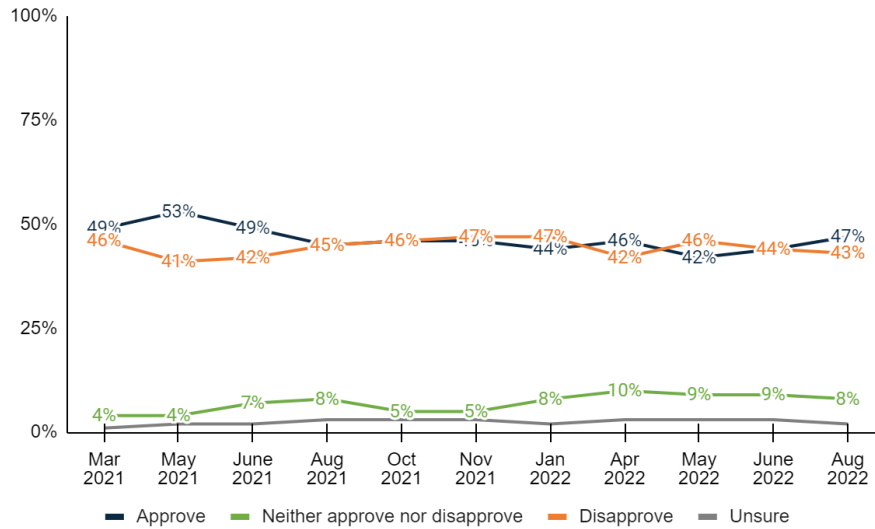


| | Freq. | % | June 2022 | May 2022 |
|----------------------------------------------|-------------------|---------------------|---------------------|---------------------|
| <u>Approve</u> | <u>238</u> | <u>38.7%</u> | <u>32.9%</u> | <u>33.3%</u> |
| Strongly approve | 141 | 22.9% | 15.0% | 14.5% |
| Somewhat approve | 97 | 15.8% | 17.9% | 18.8% |
| <u>Neither approve nor disapprove</u> | <u>27</u> | <u>4.3%</u> | <u>6.4%</u> | <u>4.9%</u> |
| <u>Disapprove</u> | <u>345</u> | <u>56.1%</u> | <u>59.8%</u> | <u>60.8%</u> |
| Somewhat disapprove | 38 | 6.1% | 6.3% | 8.7% |
| Strongly disapprove | 307 | 49.9% | 53.5% | 52.1% |
| Unsure | 6 | 0.9% | 1.0% | 1.0% |
| Total | 615 | 100.0% | 100.0% | 100.0% |



Cooper JA

9. Do you approve or disapprove of the job that Roy Cooper is doing as Governor?



| | Freq. | % | June 2022 | May 2022 |
|---------------------------------------|------------|--------------|--------------|--------------|
| Approve | 288 | 46.8% | 44.4% | 41.7% |
| Strongly approve | 198 | 32.1% | 28.0% | 26.3% |
| Somewhat approve | 90 | 14.6% | 16.4% | 15.4% |
| Neither approve nor disapprove | 46 | 7.5% | 8.7% | 9.3% |
| Disapprove | 266 | 43.3% | 43.6% | 46.1% |
| Somewhat disapprove | 78 | 12.7% | 13.0% | 14.8% |
| Strongly disapprove | 188 | 30.6% | 30.7% | 31.2% |
| Unsure | 15 | 2.4% | 3.3% | 2.9% |
| Total | 615 | 100.0% | 100.0% | 100.0% |

The following is a list of various institutions. For each one, please indicate how much trust you have in the institution: a great deal, a fair amount, not very much, or none at all.

10. U.S. Congress

| | Freq. | % |
|---------------|-------|--------|
| A great deal | 25 | 4.1% |
| A fair amount | 131 | 21.3% |
| Not very much | 267 | 43.4% |
| None at all | 168 | 27.3% |
| No opinion | 24 | 4.0% |
| Total | 615 | 100.0% |

11. The Supreme Court

| | Freq. | % |
|---------------|-------|-------|
| A great deal | 92 | 15.0% |
| A fair amount | 182 | 29.6% |
| Not very much | 175 | 28.4% |



| | | |
|-------------|-----|--------|
| None at all | 144 | 23.4% |
| No opinion | 22 | 3.6% |
| Total | 615 | 100.0% |

12. The FBI

| | Freq. | % |
|---------------|-------|--------|
| A great deal | 129 | 21.0% |
| A fair amount | 166 | 27.0% |
| Not very much | 105 | 17.0% |
| None at all | 184 | 30.0% |
| No opinion | 31 | 5.1% |
| Total | 615 | 100.0% |

Now thinking about the economy...

Recession Stance

13. Do you agree or disagree that we are currently in an economic recession?

| | Freq. | % | June 2022 |
|-----------------------------------|------------|--------------|--------------|
| Agree | 408 | 66.3% | 76.6% |
| Strongly agree | 288 | 46.9% | 52.1% |
| Somewhat agree | 119 | 19.4% | 24.5% |
| Neither agree nor disagree | 67 | 10.9% | 8.5% |
| Disagree | 120 | 19.5% | 12.6% |
| Somewhat disagree | 70 | 11.4% | 7.0% |
| Strongly disagree | 50 | 8.1% | 5.6% |
| Unsure | 21 | 3.4% | 2.2% |
| Total | 615 | 100.0% | 100.0% |

Employment Worry

14. How worried are you about losing your job in the next 12 months?

| | Freq. | % |
|--------------------|------------|--------------|
| Worried | 153 | 24.9% |
| Very worried | 66 | 10.7% |
| Somewhat worried | 87 | 14.2% |
| Not worried | 411 | 66.8% |
| Not very worried | 120 | 19.5% |
| Not worried at all | 291 | 47.3% |
| Unsure | 51 | 8.3% |
| Total | 615 | 100.0% |



Now thinking about the issue of abortion...

Abortion Stance

15. When thinking about the issue of abortion, would you consider yourself pro-life or pro-choice?

| | Freq. | % |
|-------------------------------------------------------------|------------|--------------|
| <u>Pro-life</u> | 240 | 39.0% |
| Strongly pro-life | 193 | 31.4% |
| Somewhat pro-life | 47 | 7.6% |
| <u>I don't label myself on the issue of abortion</u> | 60 | 9.8% |
| <u>Pro-choice</u> | 295 | 48.0% |
| Somewhat pro-choice | 45 | 7.2% |
| Strongly pro-choice | 251 | 40.8% |
| Unsure | 19 | 3.2% |
| Total | 615 | 100.0% |

Abortion Legality

16. When do you think abortion should be legal?

| | Freq. | % |
|---------------------------------------------------------------------------------------------------------------------------------------------|------------|--------------|
| <u>Legal</u> | 313 | 51.0% |
| Abortion should always be legal and there should be no restrictions | 183 | 29.8% |
| Abortion should be legal but with some restrictions such as for minors or late-term abortions | 130 | 21.2% |
| <u>Illegal</u> | 259 | 42.1% |
| Abortion should be illegal except in special circumstances, such as when the life of the mother is in danger, or in cases of incest or rape | 215 | 34.9% |
| Abortion should be illegal and it should never be allowed under any circumstances | 44 | 7.1% |
| Unsure | 43 | 7.0% |
| Total | 615 | 100.0% |

Abortion State Lines A/D

17. On August 3, President Joe Biden signed an executive order directing the Department of Health and Human Services (HHS) to consider using Medicaid to pay for expenses for those who cross state lines to seek abortions. Do you approve or disapprove of this executive order?

| | Freq. | % |
|----------------------------------------------|------------|--------------|
| <u>Approve</u> | 249 | 40.4% |
| Strongly approve | 194 | 31.6% |
| Somewhat approve | 54 | 8.8% |
| <u>Neither approve nor disapprove</u> | 41 | 6.6% |
| <u>Disapprove</u> | 309 | 50.3% |
| Somewhat disapprove | 46 | 7.4% |



| | | |
|---------------------|-----|--------|
| Strongly disapprove | 263 | 42.8% |
| Unsure | 17 | 2.7% |
| Total | 615 | 100.0% |

Abortion 20 Week Ban A/D

18. As you may know, the United States Supreme Court recently made a ruling overturning the Roe v. Wade case from 1972, which had established a woman’s right to an abortion. Due to this ruling, North Carolina’s General Assembly has asked a federal judge to reinstate the state’s ban on abortions after 20 weeks, a law that was passed in 1973. Would you approve or disapprove of the court reinstating the 20-week ban on abortion in North Carolina?

| | Freq. | % |
|----------------------------------------------|-------------------|---------------------|
| <u>Approve</u> | <u>271</u> | <u>44.0%</u> |
| Strongly approve | 203 | 33.1% |
| Somewhat approve | 67 | 11.0% |
| <u>Neither approve nor disapprove</u> | <u>43</u> | <u>7.0%</u> |
| <u>Disapprove</u> | <u>262</u> | <u>42.6%</u> |
| Somewhat disapprove | 27 | 4.3% |
| Strongly disapprove | 236 | 38.3% |
| Unsure | 39 | 6.4% |
| Total | 615 | 100.0% |

Sex Change A/D

19. The North Carolina state employee health plan will resume coverage for treatments leading to or in connection with sex changes or modifications, complying with a recent federal court ruling that declared the refusal of coverage unconstitutional. Do you approve or disapprove of the state employee health plan covering sex changes or modification treatments?

| | Freq. | % |
|----------------------------------------------|-------------------|---------------------|
| <u>Approve</u> | <u>184</u> | <u>29.9%</u> |
| Strongly approve | 145 | 23.5% |
| Somewhat approve | 40 | 6.4% |
| <u>Neither approve nor disapprove</u> | <u>59</u> | <u>9.5%</u> |
| <u>Disapprove</u> | <u>339</u> | <u>55.1%</u> |
| Somewhat disapprove | 44 | 7.2% |
| Strongly disapprove | 295 | 48.0% |
| Unsure | 33 | 5.4% |
| Total | 615 | 100.0% |



Now thinking about energy...

Energy Concern

20. How concerned are you about energy and gas prices in North Carolina?

| | Freq. | % |
|-----------------------------|-------------------|---------------------|
| <u>Concerned</u> | <u>539</u> | <u>87.7%</u> |
| Very concerned | 389 | 63.2% |
| Somewhat concerned | 151 | 24.5% |
| <u>Not Concerned</u> | <u>69</u> | <u>11.2%</u> |
| Not very concerned | 47 | 7.7% |
| Not concerned at all | 22 | 3.5% |
| Unsure | 7 | 1.1% |
| Total | 615 | 100.0% |

Increase Drilling A/D

21. Would you approve or disapprove of a federal law that would dramatically increase oil and gas drilling in the United States?

| | Freq. | % |
|----------------------------------------------|-------------------|---------------------|
| <u>Approve</u> | <u>371</u> | <u>60.3%</u> |
| Strongly approve | 290 | 47.2% |
| Somewhat approve | 81 | 13.1% |
| <u>Neither approve nor disapprove</u> | <u>45</u> | <u>7.3%</u> |
| <u>Disapprove</u> | <u>174</u> | <u>28.3%</u> |
| Somewhat disapprove | 69 | 11.3% |
| Strongly disapprove | 105 | 17.1% |
| Unsure | 25 | 4.1% |
| Total | 615 | 100.0% |

Energy Environment Agreement

22. Which one of these statements about energy production and the environment do you most agree?

| | Freq. | % |
|---------------------------------------------------------------------------------------------------------------------------------------------------|-------|--------|
| North Carolina lawmakers should prioritize the environment, even at the risk of increasing the cost of electricity | 230 | 37.4% |
| North Carolina lawmakers should prioritize affordability and reliability in energy, even at the risk of not meeting certain carbon emission goals | 280 | 45.5% |
| Unsure | 105 | 17.1% |
| Total | 615 | 100.0% |



23. Are you female or male?

| | Freq. | % |
|--------|-------|--------|
| Female | 339 | 55.2% |
| Male | 276 | 44.8% |
| Total | 615 | 100.0% |

24. What age range do you fall within?

| | Freq. | % |
|--------------------|------------|--------------|
| Under 50 | 240 | 39.1% |
| 18 - 34 | 97 | 15.7% |
| 35 - 49 | 144 | 23.4% |
| 50 and Over | 375 | 60.9% |
| 50 - 64 | 182 | 29.7% |
| 65 or older | 192 | 31.3% |
| Total | 615 | 100.0% |

25. How are you registered to vote in North Carolina? You may consider yourself of a different party, but what does your voter registration card show?

| | Freq. | % |
|-----------------------------|-------|--------|
| Republican | 217 | 35.3% |
| Democrat | 213 | 34.6% |
| Unaffiliated or Independent | 165 | 26.8% |
| Another party | 3 | 0.5% |
| Unsure | 17 | 2.7% |
| Total | 615 | 100.0% |

26. And thinking about your views toward politics and government, would you say you are...

| | Freq. | % |
|-----------------------|------------|--------------|
| Conservative | 277 | 45.1% |
| Very conservative | 171 | 27.7% |
| Somewhat conservative | 106 | 17.3% |
| Moderate | 162 | 26.3% |
| Liberal | 159 | 25.8% |
| Somewhat liberal | 76 | 12.3% |
| Very liberal | 83 | 13.5% |
| Unsure | 17 | 2.8% |
| Total | 615 | 100.0% |

27. Do you consider the area where you live to be more rural, suburban, or urban?

| | Freq. | % |
|----------|-------|--------|
| Rural | 236 | 38.4% |
| Suburban | 275 | 44.7% |
| Urban | 104 | 16.9% |
| Total | 615 | 100.0% |



28. What annual household income range do you fall within out of the following options?

| | Freq. | % |
|----------------------|-------|--------|
| Less than \$50,000 | 150 | 24.4% |
| \$50,000 - \$100,000 | 215 | 35.0% |
| More than \$100,000 | 206 | 33.6% |
| Unsure | 43 | 7.0% |
| Total | 615 | 100.0% |

29. Which of the following best describes your race or ethnicity?

| | Freq. | % |
|---------------------------|-------|--------|
| White or Caucasian | 415 | 67.5% |
| Asian or Pacific Islander | 8 | 1.3% |
| Black or African American | 130 | 21.2% |
| Hispanic or Latino | 27 | 4.4% |
| Other | 18 | 2.9% |
| Unsure | 17 | 2.8% |
| Total | 615 | 100.0% |

30. Thinking back, who did you vote for in the 2020 election for President?

| | Freq. | % |
|-------------------------|-------|--------|
| Republican Donald Trump | 298 | 48.5% |
| Democrat Joe Biden | 280 | 45.5% |
| Another candidate | 15 | 2.5% |
| Did not vote | 6 | 1.0% |
| Unsure | 15 | 2.5% |
| Total | 615 | 100.0% |

31. What's the highest level of education you have completed?

| | Freq. | % |
|----------------------------------------------|-------------------|---------------------|
| <u>No degree</u> | <u>308</u> | <u>50.1%</u> |
| Some high school | 6 | 1.1% |
| High school diploma/GED | 73 | 11.8% |
| Technical Certification | 27 | 4.4% |
| Some college or Associate's Degree | 202 | 32.8% |
| <u>At least College</u> | <u>306</u> | <u>49.8%</u> |
| Four-year undergraduate or Bachelor's Degree | 163 | 26.5% |
| Graduate degree or further | 144 | 23.3% |
| Unsure | 1 | 0.1% |
| Total | 615 | 100.0% |

32. General Election X of 4

| | Freq. | % |
|--------|-------|-------|
| 0 of 4 | 3 | 0.5% |
| 1 of 4 | 98 | 15.9% |
| 2 of 4 | 82 | 13.3% |



| | | |
|--------|-----|--------|
| 3 of 4 | 129 | 21.0% |
| 4 of 4 | 303 | 49.3% |
| Total | 615 | 100.0% |

33. Geo – DMA

| | Freq. | % |
|------------------------------|-------------------|---------------------|
| <u>Charlotte/West</u> | <u>220</u> | <u>35.8%</u> |
| Charlotte | 152 | 24.7% |
| Green/Spart/Ash | 63 | 10.3% |
| Chattanooga | 5 | 0.8% |
| <u>Central</u> | <u>116</u> | <u>18.9%</u> |
| Grsbro/Wnsal/Hpt | 111 | 18.1% |
| Florence/Myrtle | 5 | 0.8% |
| <u>Raleigh/Durham</u> | <u>190</u> | <u>30.8%</u> |
| <u>Coastal</u> | <u>89</u> | <u>14.5%</u> |
| Green/Nw Brn/Wsh | 44 | 7.1% |
| Wilmington | 32 | 5.2% |
| Norfolk | 14 | 2.2% |
| Total | 615 | 100.0% |

34. Geo – 2022 Congressional District

| | Freq. | % |
|-------|--------------|----------|
| 1 | 48 | 7.8% |
| 2 | 29 | 4.7% |
| 3 | 42 | 6.8% |
| 4 | 49 | 8.0% |
| 5 | 50 | 8.1% |
| 6 | 53 | 8.6% |
| 7 | 38 | 6.2% |
| 8 | 31 | 5.1% |
| 9 | 46 | 7.5% |
| 10 | 43 | 7.0% |
| 11 | 62 | 10.0% |
| 12 | 36 | 5.9% |
| 13 | 45 | 7.3% |
| 14 | 43 | 6.9% |
| Total | 615 | 100.0% |

35. Geo - Old Congressional District

| | Freq. | % |
|---|--------------|----------|
| 1 | 38 | 6.2% |
| 2 | 30 | 4.9% |
| 3 | 47 | 7.6% |
| 4 | 51 | 8.3% |
| 5 | 52 | 8.5% |
| 6 | 56 | 9.1% |
| 7 | 63 | 10.2% |



| | | |
|-------|-----|--------|
| 8 | 58 | 9.4% |
| 9 | 37 | 6.1% |
| 10 | 47 | 7.6% |
| 11 | 66 | 10.7% |
| 12 | 37 | 6.1% |
| 13 | 34 | 5.5% |
| Total | 615 | 100.0% |

36. Age + Income

| | Freq. | % |
|------------------|-------|--------|
| <65 <\$50k | 89 | 14.5% |
| <65 \$50k-\$100k | 149 | 24.2% |
| <65 \$100k+ | 159 | 25.8% |
| 65+ <\$50k | 61 | 9.9% |
| 65+ \$50k-\$100k | 67 | 10.8% |
| 65+ \$100k+ | 48 | 7.8% |
| Unsure | 43 | 7.0% |
| Total | 615 | 100.0% |

37. Gender + Age

| | Freq. | % |
|-----------|-------|--------|
| F 18 - 34 | 49 | 8.0% |
| F 35 - 49 | 89 | 14.5% |
| F 50 - 64 | 99 | 16.1% |
| F 65+ | 102 | 16.6% |
| M 18 - 34 | 47 | 7.7% |
| M 35 - 49 | 55 | 8.9% |
| M 50 - 64 | 83 | 13.5% |
| M 65+ | 90 | 14.7% |
| Total | 615 | 100.0% |

38. Race + Gender

| | Freq. | % |
|-----------------|-------|--------|
| White Female | 234 | 38.0% |
| White Male | 181 | 29.5% |
| Asian Female | 4 | 0.6% |
| Asian Male | 4 | 0.7% |
| Black Female | 71 | 11.5% |
| Black Male | 59 | 9.6% |
| Hispanic Female | 16 | 2.5% |
| Hispanic Male | 11 | 1.8% |
| Other Female | 9 | 1.5% |
| Other Male | 9 | 1.4% |
| Unsure | 17 | 2.8% |
| Total | 615 | 100.0% |



39. Gender + Education

| | Freq. | % |
|-------------------------|-------|--------|
| Female At least College | 175 | 28.4% |
| Female No degree | 164 | 26.7% |
| Male At least College | 132 | 21.4% |
| Male No degree | 144 | 23.4% |
| Unsure | 1 | 0.1% |
| Total | 615 | 100.0% |

40. Partisanship + Age

| | Freq. | % |
|---------------------|-------|--------|
| Republican 18-34 | 28 | 4.6% |
| Republican 35-49 | 44 | 7.2% |
| Republican 50-64 | 73 | 11.8% |
| Republican 65+ | 72 | 11.8% |
| Democrat 18-34 | 32 | 5.3% |
| Democrat 35-49 | 51 | 8.4% |
| Democrat 50-64 | 51 | 8.3% |
| Democrat 65+ | 78 | 12.7% |
| Unaffiliated 18-34 | 31 | 5.0% |
| Unaffiliated 35-49 | 39 | 6.4% |
| Unaffiliated 50-64 | 56 | 9.1% |
| Unaffiliated 65+ | 39 | 6.4% |
| Another party 18-34 | 1 | 0.2% |
| Another party 35-49 | 1 | 0.2% |
| Another party 50-64 | 1 | 0.2% |
| Unsure | 17 | 2.7% |
| Total | 615 | 100.0% |

41. Partisanship + Gender

| | Freq. | % |
|----------------------|-------|--------|
| Republican Female | 119 | 19.3% |
| Republican Male | 98 | 16.0% |
| Democrat Female | 136 | 22.2% |
| Democrat Male | 76 | 12.4% |
| Unaffiliated Female | 73 | 11.9% |
| Unaffiliated Male | 92 | 14.9% |
| Another party Female | 2 | 0.4% |
| Another party Male | 1 | 0.2% |
| Unsure | 17 | 2.7% |
| Total | 615 | 100.0% |

METHODOLOGY

This probabilistic survey was conducted August 13 – 15, 2022, with 615 likely general election voters. It has a margin of error of $\pm 3.90\%$. Known registered voters were interviewed via live phones and SMS. This survey was weighted to a likely general election voter universe.



ABOUT THE FIRM

[Cygnal](#) is an award-winning international polling, public opinion, and predictive analytics firm that pioneered multi-mode polling, text-to-web collection, and emotive analysis. Cygnal consistently ranks as the most accurate firm, and clients rely on Cygnal's ability to create intelligence for action. Its team members have worked in 48 states and multiple countries on more than 2,700 corporate, public affairs, and political campaigns

