



CYGNAL

Survey of Likely General Election Voters

North Carolina Statewide

Conducted September 24 – 26, 2022

n=650 | $\pm 3.79\%$



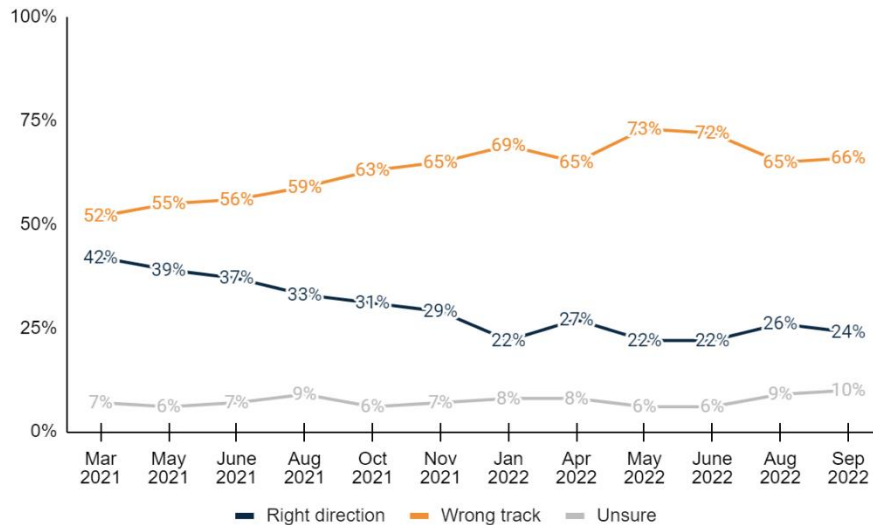
Likelihood to Vote

1. How do you plan to vote in the general election in November for U.S. Senate, Congress, and the State Legislature out of the following options?

	Freq.	%	Aug 2022
<u>Vote in-person on Election Day</u>	318	48.9%	47.2%
Definitely vote in-person on Election Day	252	38.7%	37.3%
Probably vote in-person on Election Day	66	10.1%	9.9%
<u>Vote absentee by mail</u>	54	8.4%	7.7%
Definitely vote absentee by mail	37	5.7%	5.2%
Probably vote absentee by mail	17	2.7%	2.5%
<u>Vote early in-person</u>	278	42.8%	45.1%
Definitely vote early in-person	159	24.4%	26.2%
Probably vote early in-person	119	18.3%	18.9%
Total	650	100.0%	100.0%

Direction of Country

2. Generally speaking, would you say things in the United States are headed in the right direction or off on the wrong track?



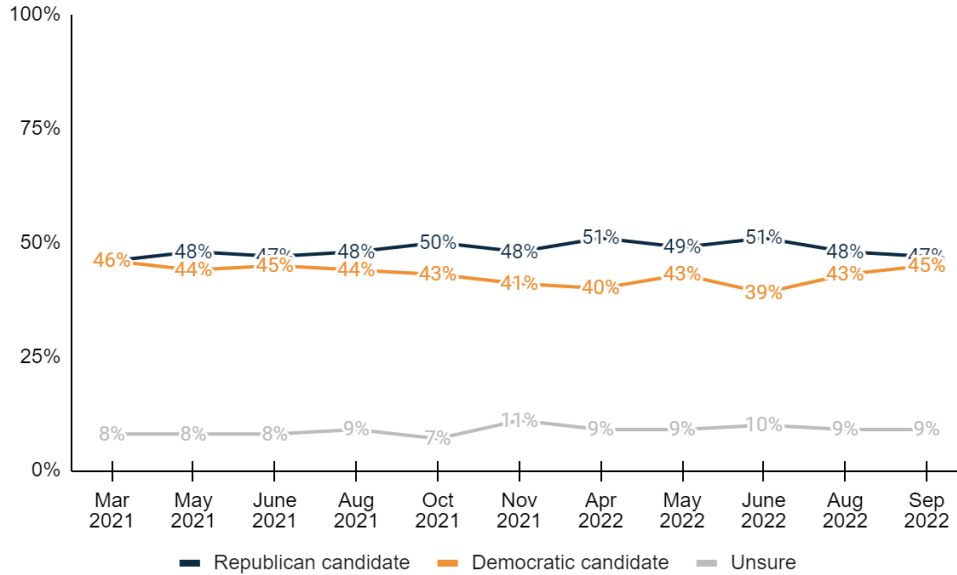
	Freq.	%	Aug 2022	June 2022
<u>Right direction</u>	156	24.0%	26.4%	21.9%
Definitely the right direction	41	6.3%	7.2%	3.1%
Mostly the right direction	116	17.8%	19.2%	18.8%
<u>Wrong track</u>	431	66.3%	64.8%	71.8%
Mostly the wrong track	102	15.8%	14.4%	16.7%
Definitely the wrong track	329	50.6%	50.4%	55.1%
Unsure	63	9.6%	8.8%	6.3%
Total	650	100.0%	100.0%	100.0%



Now thinking about the general election in November...

State Generic Ballot

3. If the general election for State Legislature was held today, would you vote for the Republican candidate or the Democratic candidate?



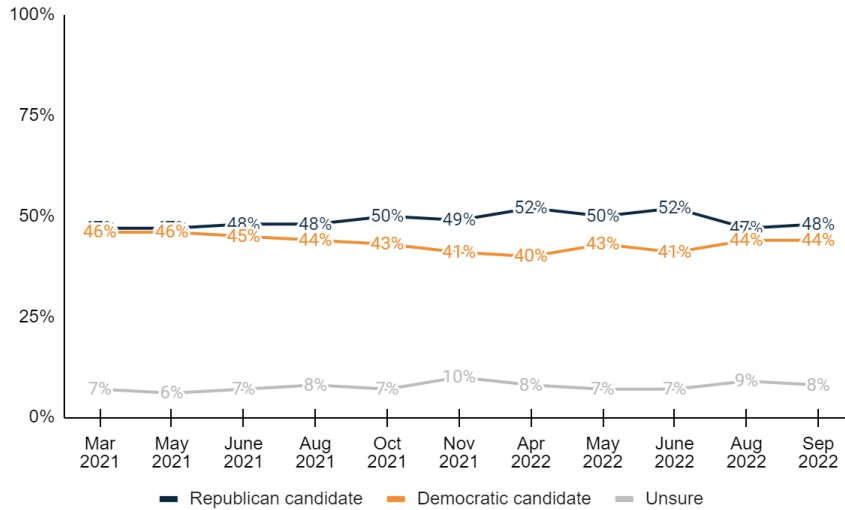
	Freq.	%	Aug 2022	June 2022
Republican candidate	303	46.6%	47.9%	50.7%
Definitely the Republican candidate	245	37.7%	42.3%	44.8%
Probably the Republican candidate	58	8.9%	5.6%	5.9%
Democratic candidate	289	44.5%	42.9%	39.3%
Probably the Democratic candidate	54	8.2%	6.6%	6.7%
Definitely the Democratic candidate	236	36.2%	36.4%	32.5%
Undecided	58	8.9%	9.2%	10.1%
Total	650	100.0%	100.0%	100.0%

Congressional Generic Ballot

4. And regardless of how you would vote at the state level, if the general election for U.S. Congress was held today, would you vote for the Republican candidate or the Democratic candidate?

	Freq.	%	Aug 2022	June 2022
Republican candidate	308	47.5%	47.3%	51.5%
Definitely the Republican candidate	248	38.1%	41.5%	45.8%
Probably the Republican candidate	61	9.3%	5.8%	5.8%
Democratic candidate	288	44.2%	44.0%	41.0%
Probably the Democratic candidate	42	6.5%	6.7%	7.7%
Definitely the Democratic candidate	245	37.7%	37.3%	33.4%
Undecided	54	8.3%	8.7%	7.4%
Total	650	100.0%	100.0%	100.0%





Senate Ballot

5. If the general election for U.S. Senate was held today, and you had to make a choice, who would you vote for?

	Freq.	%	Aug 2022	June 2022	May 2022
<u>Republican Ted Budd</u>	284	43.7%	42.3%	45.0%	43.6%
Definitely Republican Ted Budd	223	34.2%	37.1%	38.2%	
Probably Republican Ted Budd	62	9.5%	5.2%	6.8%	
<u>Democrat Cheri Beasley</u>	286	44.0%	42.3%	40.3%	41.8%
Probably Democrat Cheri Beasley	41	6.3%	6.5%	9.5%	
Definitely Democrat Cheri Beasley	245	37.7%	35.8%	30.8%	
<u>Green Party candidate Matthew Hoh</u>	4	0.6%	0.8%	0.9%	0.7%
<u>Libertarian Shannon Bray</u>	9	1.3%	1.9%	2.9%	1.9%
Undecided	67	10.3%	12.6%	11.0%	12.0%
Total	650	100.0%	100.0%	100.0%	100.0%

As you may know, North Carolina elects its State Supreme Court justices, and two seats are up for election this year.

SC Ballot 1

6. If the general election for North Carolina Supreme Court was held today, and you had to make a choice between the following two candidates, who would you vote for?

	Freq.	%	Aug 2022	June 2022	May 2022
<u>Republican Richard Dietz</u>	289	44.5%	45.2%	49.1%	43.6%
Definitely Republican Richard Dietz	209	32.2%	36.8%	39.2%	35.7%
Probably Republican Richard Dietz	80	12.3%	8.4%	9.9%	8.0%
<u>Democrat Lucy Inman</u>	263	40.5%	39.4%	38.4%	40.3%
Probably Democrat Lucy Inman	51	7.8%	7.5%	9.8%	8.9%



Definitely Democrat Lucy Inman	213	32.7%	31.9%	28.6%	31.4%
Undecided	97	15.0%	15.4%	12.5%	16.1%
Total	650	100.0%	100.0%	100.0%	100.0%

SC Ballot 2

7. And again, if the general election for North Carolina Supreme Court was held today, and you had to make a choice between the following two candidates, who would you vote for?

	Freq.	%	Aug 2022	June 2022	May 2022
<u>Democrat Sam J. Ervin</u>	253	38.9%	40.1%	39.0%	39.5%
Definitely Democrat Sam J. Ervin	205	31.5%	31.4%	29.0%	30.7%
Probably Democrat Sam J. Ervin	48	7.4%	8.8%	10.0%	8.8%
<u>Republican Trey Allen</u>	299	46.0%	45.1%	48.6%	46.1%
Probably Republican Trey Allen	80	12.4%	7.9%	9.4%	8.6%
Definitely Republican Trey Allen	219	33.7%	37.1%	39.2%	37.5%
Undecided	98	15.0%	14.8%	12.4%	14.4%
Total	650	100.0%	100.0%	100.0%	100.0%

Election Interest

8. On a scale of 0 to 7, how would you rate your interest in this year's elections for Congress, with 0 meaning not interested at all and 7 meaning extremely interested?

	Freq.	%
0	11	1.6%
1	3	0.5%
2	9	1.3%
3	12	1.8%
4	44	6.7%
5	70	10.8%
6	42	6.4%
7	448	69.0%
Unsure	11	1.7%
Total	650	100.0%

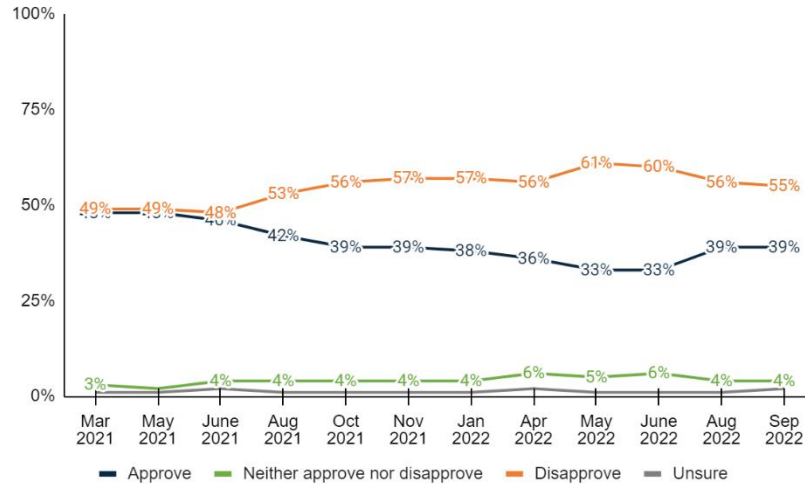
Biden JA

9. Do you approve or disapprove the job that Joe Biden is doing as President?

	Freq.	%	Aug 2022	June 2022
<u>Approve</u>	256	39.3%	38.7%	32.9%
Strongly approve	114	17.5%	22.9%	15.0%
Somewhat approve	142	21.8%	15.8%	17.9%
<u>Neither approve nor disapprove</u>	28	4.2%	4.3%	6.4%
<u>Disapprove</u>	357	54.9%	56.1%	59.8%

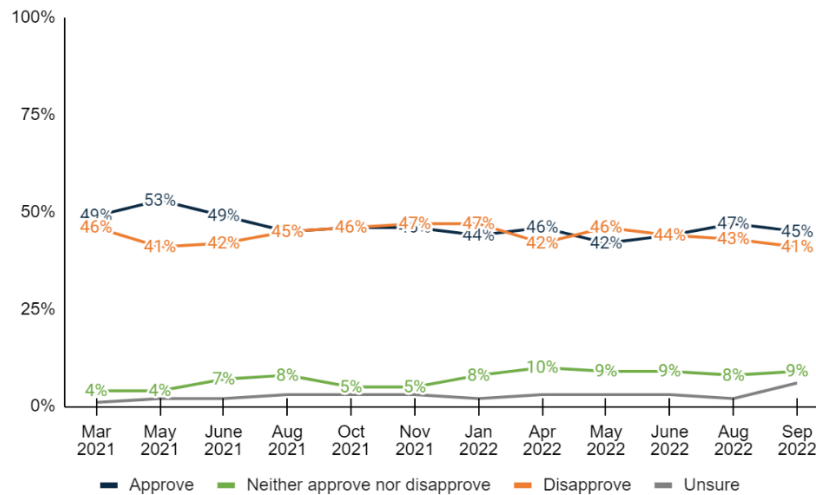


Somewhat disapprove	46	7.1%	6.1%	6.3%
Strongly disapprove	311	47.9%	49.9%	53.5%
Unsure	10	1.5%	0.9%	1.0%
Total	650	100.0%	100.0%	100.0%



Cooper JA

10. Do you approve or disapprove of the job that Roy Cooper is doing as Governor?



	Freq.	%	Aug 2022	June 2022
Approve	293	45.0%	46.8%	44.4%
Strongly approve	196	30.1%	32.1%	28.0%
Somewhat approve	97	15.0%	14.6%	16.4%
Neither approve nor disapprove	55	8.5%	7.5%	8.7%
Disapprove	264	40.7%	43.3%	43.6%
Somewhat disapprove	88	13.5%	12.7%	13.0%
Strongly disapprove	176	27.1%	30.6%	30.7%
Unsure	38	5.8%	2.4%	3.3%
Total	650	100.0%	100.0%	100.0%



The following is a list of names of various people who may have been mentioned in the news recently. For each one, please indicate if you have heard of the person, and if you have, whether you have a favorable or unfavorable opinion of them. If you haven't heard of a name, choose so.

11. Donald Trump

	Freq.	%
<u>Favorable</u>	<u>279</u>	<u>42.9%</u>
Very favorable	190	29.3%
Somewhat favorable	89	13.7%
<u>Unfavorable</u>	<u>339</u>	<u>52.2%</u>
Somewhat unfavorable	29	4.4%
Very unfavorable	310	47.8%
No opinion	24	3.7%
Never heard of	7	1.2%
Total	650	100.0%

12. Joe Biden

	Freq.	%
<u>Favorable</u>	<u>274</u>	<u>42.2%</u>
Very favorable	142	21.9%
Somewhat favorable	132	20.3%
<u>Unfavorable</u>	<u>354</u>	<u>54.5%</u>
Somewhat unfavorable	40	6.2%
Very unfavorable	314	48.2%
No opinion	15	2.3%
Never heard of	7	1.1%
Total	650	100.0%

13. Ted Budd

	Freq.	%
<u>Favorable</u>	<u>259</u>	<u>39.9%</u>
Very favorable	135	20.7%
Somewhat favorable	124	19.1%
<u>Unfavorable</u>	<u>257</u>	<u>39.6%</u>
Somewhat unfavorable	41	6.3%
Very unfavorable	216	33.3%
No opinion	92	14.2%
Never heard of	41	6.4%
Total	650	100.0%

14. Cheri Beasley

	Freq.	%
<u>Favorable</u>	<u>290</u>	<u>44.6%</u>
Very favorable	178	27.3%
Somewhat favorable	112	17.3%



<u>Unfavorable</u>	<u>212</u>	<u>32.6%</u>
Somewhat unfavorable	51	7.8%
Very unfavorable	162	24.9%
No opinion	112	17.3%
Never heard of	36	5.5%
Total	650	100.0%

Now thinking about the economy and financial issues...

Recession Stance

15. How likely do you think it is that there will be an economic recession during the next twelve months?

	Freq.	%
<u>Likely</u>	<u>363</u>	<u>55.9%</u>
Very likely	211	32.5%
Somewhat likely	152	23.5%
<u>Not Likely</u>	<u>49</u>	<u>7.6%</u>
Not very likely	36	5.5%
Not at all likely	14	2.1%
<u>We are already in a recession</u>	<u>186</u>	<u>28.6%</u>
Unsure	51	7.9%
Total	650	100.0%

Food Prices

16. How difficult or easy do you find it to afford food right now?

	Freq.	%
<u>Difficult</u>	<u>344</u>	<u>52.9%</u>
Very difficult	115	17.7%
Somewhat difficult	229	35.2%
<u>Neither difficult nor easy</u>	<u>144</u>	<u>22.1%</u>
<u>Easy</u>	<u>149</u>	<u>22.9%</u>
Somewhat easy	75	11.5%
Very easy	74	11.4%
Unsure	13	2.1%
Total	650	100.0%

Gas Prices

17. How difficult or easy do you find it to afford gas right now?

	Freq.	%
<u>Difficult</u>	<u>367</u>	<u>56.5%</u>
Very difficult	145	22.3%



Somewhat difficult	222	34.2%
<u>Neither difficult nor easy</u>	<u>138</u>	<u>21.3%</u>
<u>Easy</u>	<u>131</u>	<u>20.2%</u>
Somewhat easy	64	9.9%
Very easy	67	10.3%
Unsure	14	2.1%
Total	650	100.0%

Housing Prices

18. How difficult or easy do you find it to afford housing right now?

	Freq.	%
<u>Difficult</u>	<u>315</u>	<u>48.5%</u>
Very difficult	192	29.5%
Somewhat difficult	124	19.0%
<u>Neither difficult nor easy</u>	<u>153</u>	<u>23.5%</u>
<u>Easy</u>	<u>140</u>	<u>21.5%</u>
Somewhat easy	53	8.1%
Very easy	87	13.4%
Unsure	42	6.5%
Total	650	100.0%

Now thinking about this upcoming election and issues of election integrity...

Free and Fair

19. Do you believe this year's elections in North Carolina will be free and fair?

	Freq.	%
<u>Yes</u>	<u>376</u>	<u>57.8%</u>
Definitely yes	143	22.0%
Probably yes	233	35.9%
<u>No</u>	<u>180</u>	<u>27.7%</u>
Probably no	131	20.2%
Definitely no	49	7.5%
Unsure	94	14.4%
Total	650	100.0%

Photo I.D.

20. Do you agree or disagree with the following statement: "Every person that votes in person in North Carolina should present photo identification before voting?"

	Freq.	%
<u>Agree</u>	<u>407</u>	<u>62.6%</u>



Strongly agree	347	53.4%
Somewhat agree	60	9.2%
<u>Neither agree nor disagree</u>	<u>62</u>	<u>9.5%</u>
<u>Disagree</u>	<u>167</u>	<u>25.7%</u>
Somewhat disagree	49	7.6%
Strongly disagree	118	18.1%
Unsure	14	2.2%
Total	650	100.0%

Voter Fraud Problem

21. How much of a problem is voter fraud in the United States – that is, votes being cast in the name of people who are not eligible to vote? Is it a major problem, minor problem, or not a problem?

	Freq.	%
Major problem	274	42.2%
Minor problem	159	24.5%
Not a problem at all	160	24.6%
Unsure	57	8.7%
Total	650	100.0%

Election Laws

22. Do you believe that laws regarding how North Carolina’s elections should be determined by the State Legislature of North Carolina or U.S. Congress?

	Freq.	%
<u>State Legislature</u>	<u>345</u>	<u>53.1%</u>
Definitely State Legislature	233	35.9%
Probably State Legislature	112	17.2%
<u>U.S. Congress</u>	<u>160</u>	<u>24.7%</u>
Probably U.S. Congress	67	10.2%
Definitely U.S. Congress	94	14.4%
Unsure	145	22.2%
Total	650	100.0%

Government-Type of US

23. Would you describe the type of government in the United States? Would you say we have a democracy or a republic?

	Freq.	%
<u>Democracy</u>	<u>208</u>	<u>32.0%</u>
Definitely a democracy	125	19.3%
Probably a democracy	83	12.7%
<u>Neither a republic nor a democracy</u>	<u>147</u>	<u>22.7%</u>
<u>Republic</u>	<u>206</u>	<u>31.7%</u>
Probably a republic	58	8.9%



Definitely a republic	148	22.8%
Unsure	89	13.6%
Total	650	100.0%

24. Are you female or male?

	Freq.	%
Female	359	55.2%
Male	291	44.8%
Total	650	100.0%

25. What age range do you fall within?

	Freq.	%
<u>Under 50</u>	<u>254</u>	<u>39.1%</u>
18 - 34	102	15.7%
35 - 49	152	23.4%
<u>50 and Over</u>	<u>396</u>	<u>60.9%</u>
50 - 64	193	29.7%
65 or older	203	31.3%
Total	650	100.0%

26. How are you registered to vote in North Carolina? You may consider yourself of a different party, but what does your voter registration card show?

	Freq.	%
Republican	229	35.3%
Democrat	225	34.6%
Unaffiliated or Independent	184	28.3%
Another party	5	0.8%
Unsure	6	1.0%
Total	650	100.0%

27. And thinking about your views toward politics and government, would you say you are...

	Freq.	%
<u>Conservative</u>	<u>303</u>	<u>46.6%</u>
Very conservative	149	23.0%
Somewhat conservative	154	23.6%
<u>Moderate</u>	<u>172</u>	<u>26.4%</u>
<u>Liberal</u>	<u>155</u>	<u>23.9%</u>
Somewhat liberal	84	13.0%
Very liberal	71	10.9%
Unsure	20	3.1%
Total	650	100.0%



28. Do you consider the area where you live to be more rural, suburban, or urban?

	Freq.	%
Rural	242	37.3%
Suburban	318	48.9%
Urban	90	13.8%
Total	650	100.0%

29. What annual household income range do you fall within out of the following options?

	Freq.	%
Less than \$50,000	137	21.0%
\$50,000 - \$100,000	241	37.1%
More than \$100,000	165	25.4%
Unsure / refused	106	16.4%
Total	650	100.0%

30. Which of the following best describes your race or ethnicity?

	Freq.	%
White or Caucasian	439	67.5%
Asian or Pacific Islander	8	1.3%
Black or African American	138	21.2%
Hispanic or Latino	18	2.8%
Other	24	3.8%
Unsure	22	3.4%
Total	650	100.0%

31. How long have you lived in North Carolina?

	Freq.	%
Less than 2 years	11	1.7%
Between 2-5 years	28	4.4%
Between 5-10 years	48	7.3%
Between 10-20 years	90	13.9%
20 years or more	262	40.3%
All my life	210	32.4%
Total	650	100.0%

32. Thinking back, who did you vote for in the 2020 election for President?

	Freq.	%
Republican Donald Trump	315	48.5%
Democrat Joe Biden	296	45.5%
Another candidate	12	1.8%
Did not vote	14	2.1%
Unsure	13	2.1%
Total	650	100.0%



33. What's the highest level of education you have completed?

	Freq.	%
<u>No degree</u>	<u>374</u>	<u>57.5%</u>
Some high school	10	1.5%
High school diploma/GED	89	13.7%
Technical Certification	24	3.7%
Some college or Associate's Degree	251	38.6%
<u>At least College</u>	<u>272</u>	<u>41.8%</u>
Four-year undergraduate or Bachelor's Degree	160	24.6%
Graduate degree or further	112	17.2%
Unsure	5	0.7%
Total	650	100.0%

34. General Election X of 4

	Freq.	%
0 of 4	30	4.6%
1 of 4	67	10.3%
2 of 4	71	11.0%
3 of 4	163	25.2%
4 of 4	319	49.0%
Total	650	100.0%

35. Geo – DMA

	Freq.	%
<u>Charlotte/West</u>	<u>233</u>	<u>35.8%</u>
Charlotte	189	29.1%
Green/Spart/Ash	43	6.6%
<u>Central</u>	<u>123</u>	<u>18.9%</u>
Grsbro/Wnsal/Hpt	118	18.1%
Florence/Myrtle	5	0.8%
<u>Raleigh/Durham</u>	<u>200</u>	<u>30.8%</u>
<u>Coastal</u>	<u>95</u>	<u>14.5%</u>
Green/Nw Brn/Wsh	53	8.1%
Norfolk	14	2.1%
Wilmington	28	4.3%
Total	650	100.0%

36. Geo – 2022 Congressional District

	Freq.	%
1	37	5.6%
2	60	9.2%
3	58	8.9%
4	48	7.4%
5	42	6.4%



6	45	6.9%
7	36	5.6%
8	53	8.2%
9	37	5.7%
10	49	7.5%
11	41	6.3%
12	53	8.2%
13	47	7.2%
14	44	6.8%
Total	650	100.0%

37. Geo - Old Congressional District

	Freq.	%
1	33	5.1%
2	72	11.0%
3	59	9.1%
4	57	8.8%
5	31	4.8%
6	46	7.0%
7	45	6.9%
8	33	5.1%
9	37	5.6%
10	62	9.5%
11	42	6.5%
12	70	10.8%
13	64	9.9%
Total	650	100.0%

38. Age + Income

	Freq.	%
<65 <\$50k	80	12.2%
<65 \$50k-\$100k	174	26.8%
<65 \$100k+	134	20.6%
65+ <\$50k	57	8.8%
65+ \$50k-\$100k	67	10.3%
65+ \$100k+	32	4.8%
Unsure	106	16.4%
Total	650	100.0%

39. Gender + Age

	Freq.	%
F 18 - 34	60	9.2%
F 35 - 49	78	12.0%
F 50 - 64	111	17.0%
F 65+	110	16.9%
M 18 - 34	42	6.5%
M 35 - 49	74	11.3%
M 50 - 64	82	12.6%
M 65+	93	14.3%
Total	650	100.0%



40. Race + Gender

	Freq.	%
White Female	247	37.9%
White Male	192	29.6%
Asian Female	5	0.8%
Asian Male	3	0.5%
Black Female	76	11.6%
Black Male	62	9.6%
Hispanic Female	10	1.5%
Hispanic Male	8	1.3%
Other Female	11	1.6%
Other Male	14	2.1%
Unsure	22	3.4%
Total	650	100.0%

41. Gender + Education

	Freq.	%
Female At least College	159	24.5%
Female No degree	198	30.4%
Male At least College	113	17.3%
Male No degree	176	27.0%
Unsure	5	0.7%
Total	650	100.0%

42. Partisanship + Age

	Freq.	%
Republican 18-34	25	3.8%
Republican 35-49	58	9.0%
Republican 50-64	73	11.3%
Republican 65+	73	11.3%
Democrat 18-34	32	5.0%
Democrat 35-49	36	5.5%
Democrat 50-64	65	10.0%
Democrat 65+	92	14.1%
Unaffiliated 18-34	40	6.1%
Unaffiliated 35-49	54	8.3%
Unaffiliated 50-64	52	8.0%
Unaffiliated 65+	38	5.9%
Another party 18-34	1	0.1%
Another party 35-49	3	0.5%
Another party 50-64	2	0.2%
Unsure	6	1.0%
Total	650	100.0%

43. Partisanship + Gender

	Freq.	%
Republican Female	116	17.8%
Republican Male	113	17.5%



Democrat Female	145	22.4%
Democrat Male	79	12.2%
Unaffiliated Female	92	14.1%
Unaffiliated Male	92	14.1%
Another party Female	3	0.4%
Another party Male	3	0.4%
Unsure	6	1.0%
Total	650	100.0%

METHODOLOGY

This probabilistic survey was conducted September 24 – 26, 2022, with 650 likely general election voters. It has a margin of error of $\pm 3.79\%$. Known registered voters were interviewed via live phones and SMS. This survey was weighted to a likely general election voter universe.

ABOUT THE FIRM

[Cygnal](#) is an award-winning international polling, public opinion, and predictive analytics firm that pioneered multi-mode polling, text-to-web collection, and emotive analysis. Cygnal consistently ranks as the most accurate firm, and clients rely on Cygnal's ability to create intelligence for action. Its team members have worked in 48 states and multiple countries on more than 2,700 corporate, public affairs, and political campaigns

