

CYGNAL

Survey of Likely General Election Voters

North Carolina Statewide

Conducted October 20 – 22, 2022

n=600 | $\pm 3.99\%$



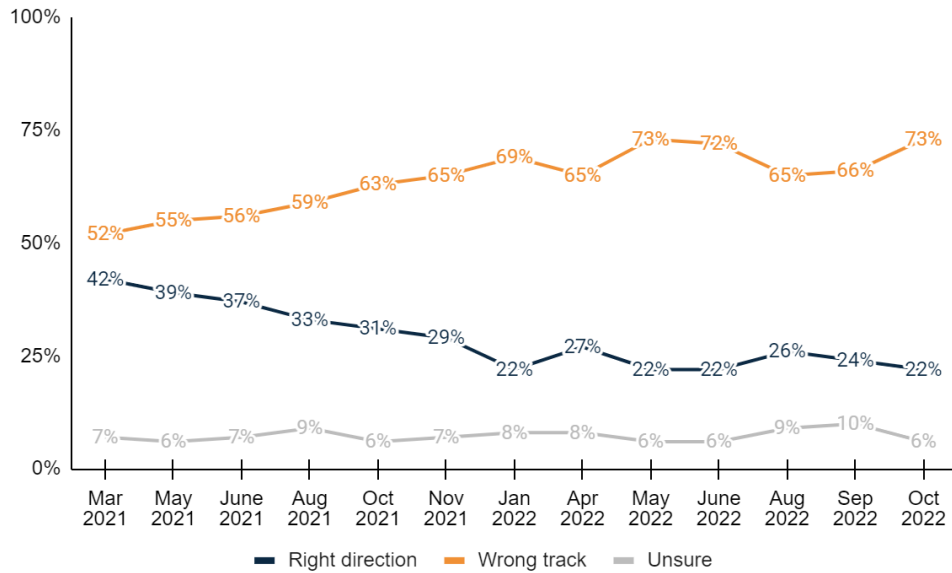
Likelihood to Vote

1. How do you plan to vote in the general election in November for U.S. Senate, Congress, and the State Legislature out of the following options?

	Freq.	%	Sep 2022	Aug 2022
<u>Vote in-person on Election Day</u>	223	37.1%	48.9%	47.2%
Definitely vote in-person on Election Day	166	27.6%	38.7%	37.3%
Probably vote in-person on Election Day	57	9.5%	10.1%	9.9%
<u>Vote absentee by mail</u>	53	8.9%	8.4%	7.7%
Definitely or already voted absentee by mail	40	6.7%	5.7%	5.2%
Probably vote absentee by mail	13	2.2%	2.7%	2.5%
<u>Vote early in-person</u>	324	53.9%	42.8%	45.1%
Definitely or already voted early in-person	163	27.1%	24.4%	26.2%
Probably vote early in-person	161	26.9%	18.3%	18.9%
Total	600	100.0%	100.0%	100.0%

Direction of Country

2. Generally speaking, would you say things in the United States are headed in the right direction or off on the wrong track?



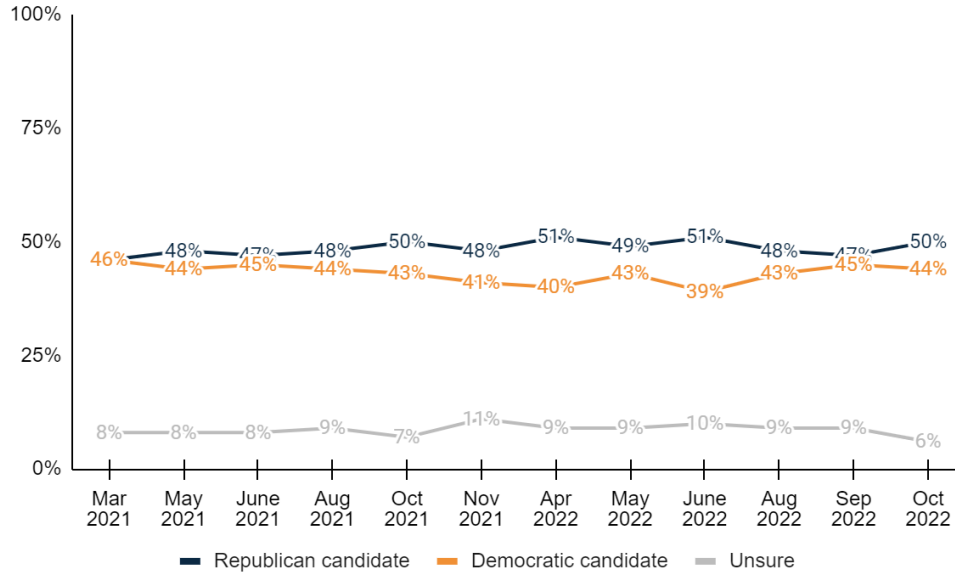
	Freq.	%	Sep 2022	Aug 2022
<u>Right direction</u>	130	21.6%	24.0%	26.4%
Definitely the right direction	38	6.3%	6.3%	7.2%
Mostly the right direction	92	15.4%	17.8%	19.2%
<u>Wrong track</u>	435	72.5%	66.3%	64.8%
Mostly the wrong track	100	16.7%	15.8%	14.4%
Definitely the wrong track	335	55.8%	50.6%	50.4%
Unsure	35	5.9%	9.6%	8.8%
Total	600	100.0%	100.0%	100.0%



Now thinking about the general election in November...

State Generic Ballot

3. If the general election for State Legislature was held today, would you vote for the Republican candidate or the Democratic candidate?



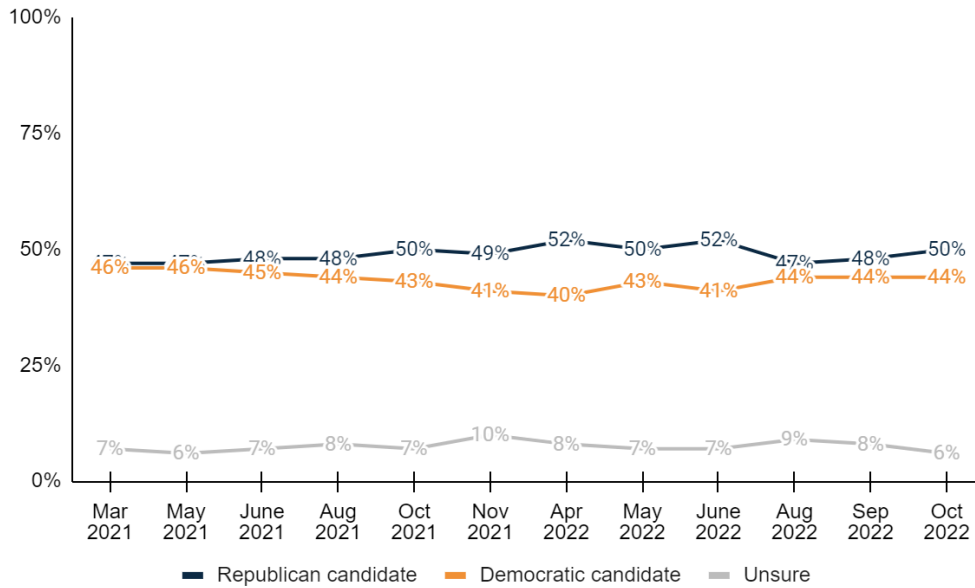
	Freq.	%	Sep 2022	Aug 2022
Republican candidate	301	50.1%	46.6%	47.9%
Definitely the Republican candidate	273	45.5%	37.7%	42.3%
Probably the Republican candidate	28	4.6%	8.9%	5.6%
Democratic candidate	263	43.9%	44.5%	42.9%
Probably the Democratic candidate	31	5.2%	8.2%	6.6%
Definitely the Democratic candidate	232	38.7%	36.2%	36.4%
Undecided	36	6.0%	8.9%	9.2%
Total	600	100.0%	100.0%	100.0%

Congressional Generic Ballot

4. And regardless of how you would vote at the state level, if the general election for U.S. Congress was held today, would you vote for the Republican candidate or the Democratic candidate?

	Freq.	%	Sep 2022	Aug 2022
Republican candidate	302	50.3%	47.5%	47.3%
Definitely the Republican candidate	273	45.5%	38.1%	41.5%
Probably the Republican candidate	29	4.8%	9.3%	5.8%
Democratic candidate	265	44.2%	44.2%	44.0%
Probably the Democratic candidate	26	4.3%	6.5%	6.7%
Definitely the Democratic candidate	239	39.9%	37.7%	37.3%
Undecided	33	5.5%	8.3%	8.7%
Total	600	100.0%	100.0%	100.0%





Senate Ballot

5. If the general election for U.S. Senate was held today, and you had to make a choice, who would you vote for?

	Freq.	%	Sep 2022	Aug 2022	June 2022	May 2022
Green Party Candidate Matthew Hoh	3	0.4%	0.6%	0.8%	0.9%	1.9%
Democrat Cheri Beasley	258	43.1%	44.0%	42.3%	40.3%	41.8%
Libertarian Shannon Bray	14	2.3%	1.3%	1.9%	2.9%	1.9%
Republican Ted Budd	282	46.9%	43.7%	42.3%	45.0%	43.6%
Undecided	44	7.3%	10.3%	12.6%	11.0%	12.0%
Total	600	100.0%	100.0%	100.0%	100.0%	100.0%

As you may know, North Carolina elects its State Supreme Court justices, and two seats are up for election this year.

SC Ballot 1

6. If the general election for North Carolina Supreme Court was held today, and you had to make a choice between the following two candidates, who would you vote for?

	Freq.	%	Sep 2022	Aug 2022	June 2022	May 2022
Republican Richard Dietz	293	48.8%	44.5%	45.2%	49.1%	43.6%
Definitely Republican Richard Dietz	243	40.5%	32.2%	36.8%	39.2%	35.7%
Probably Republican Richard Dietz	50	8.3%	12.3%	8.4%	9.9%	8.0%
Democrat Lucy Inman	254	42.4%	40.5%	39.4%	38.4%	40.3%
Probably Democrat Lucy Inman	30	5.0%	7.8%	7.5%	9.8%	8.9%
Definitely Democrat Lucy Inman	224	37.4%	32.7%	31.9%	28.6%	31.4%
Undecided	53	8.8%	15.0%	15.4%	12.5%	16.1%
Total	600	100.0%	100.0%	100.0%	100.0%	100.0%



SC Ballot 2

7. And again, if the general election for North Carolina Supreme Court was held today, and you had to make a choice between the following two candidates, who would you vote for?

	Freq.	%	Sep 2022	Aug 2022	June 2022	May 2022
<u>Democrat Sam J. Ervin</u>	<u>252</u>	<u>42.0%</u>	<u>38.9%</u>	<u>40.1%</u>	<u>39.0%</u>	<u>39.5%</u>
Definitely Democrat Sam J. Ervin	211	35.1%	31.5%	31.4%	29.0%	30.7%
Probably Democrat Sam J. Ervin	42	6.9%	7.4%	8.8%	10.0%	8.8%
<u>Republican Trey Allen</u>	<u>296</u>	<u>49.4%</u>	<u>46.0%</u>	<u>45.1%</u>	<u>48.6%</u>	<u>46.1%</u>
Probably Republican Trey Allen	52	8.6%	12.4%	7.9%	9.4%	8.6%
Definitely Republican Trey Allen	244	40.7%	33.7%	37.1%	39.2%	37.5%
Undecided	51	8.6%	15.0%	14.8%	12.4%	14.4%
Total	600	100.0%	100.0%	100.0%	100.0%	100.0%

Election Interest

8. On a scale of 0 to 7, how would you rate your interest in this year's elections for Congress, with 0 meaning not interested at all and 7 meaning extremely interested?

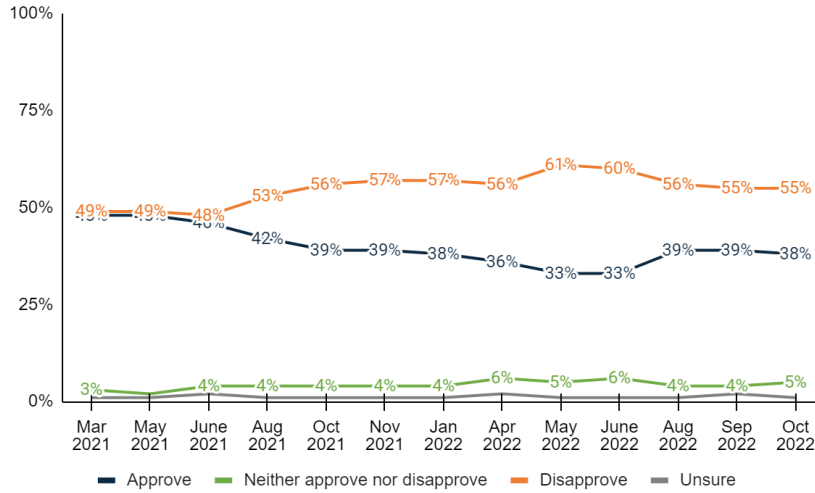
	Freq.	%	Sep 2022
0	4	0.7%	1.6%
1	2	0.3%	0.5%
2	3	0.5%	1.3%
3	10	1.6%	1.8%
4	25	4.1%	6.7%
5	54	9.0%	10.8%
6	41	6.9%	6.4%
7	454	75.6%	69.0%
Unsure	8	1.3%	1.7%
Total	600	100.0%	100.0%

Biden JA

9. Do you approve or disapprove the job that Joe Biden is doing as President?

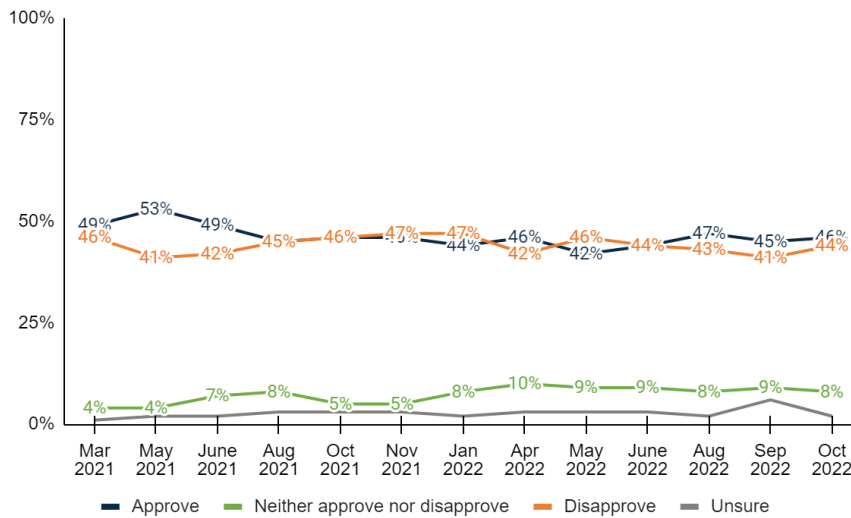
	Freq.	%	Sep 2022	Aug 2022
<u>Approve</u>	<u>231</u>	<u>38.4%</u>	<u>39.3%</u>	<u>38.7%</u>
Strongly approve	122	20.3%	17.5%	22.9%
Somewhat approve	109	18.1%	21.8%	15.8%
<u>Neither approve nor disapprove</u>	<u>32</u>	<u>5.4%</u>	<u>4.2%</u>	<u>4.3%</u>
<u>Disapprove</u>	<u>332</u>	<u>55.3%</u>	<u>54.9%</u>	<u>56.1%</u>
Somewhat disapprove	29	4.8%	7.1%	6.1%
Strongly disapprove	303	50.5%	47.9%	49.9%
Unsure	5	0.9%	1.5%	0.9%
Total	600	100.0%	100.0%	100.0%





Cooper JA

10. Do you approve or disapprove of the job that Roy Cooper is doing as Governor?



	Freq.	%	Sep 2022	Aug 2022
Approve	279	46.4%	45.0%	46.8%
Strongly approve	182	30.4%	30.1%	32.1%
Somewhat approve	96	16.0%	15.0%	14.6%
Neither approve nor disapprove	47	7.9%	8.5%	7.5%
Disapprove	261	43.5%	40.7%	43.3%
Somewhat disapprove	75	12.4%	13.5%	12.7%
Strongly disapprove	186	31.0%	27.1%	30.6%
Unsure	14	2.3%	5.8%	2.4%
Total	600	100.0%	100.0%	100.0%



Cooper 2024

11. Would you support or oppose Roy Cooper if he was the Vice-Presidential nominee in 2024?

	Freq.	%
<u>Support</u>	<u>245</u>	<u>40.8%</u>
Strongly support	157	26.1%
Somewhat support	88	14.6%
<u>Neither support nor oppose</u>	<u>35</u>	<u>5.8%</u>
<u>Oppose</u>	<u>269</u>	<u>44.8%</u>
Somewhat oppose	31	5.2%
Strongly oppose	238	39.6%
Unsure	52	8.6%
Total	600	100.0%

Biden 2024

12. Do you think Joe Biden should run for Presidential reelection in 2024?

	Freq.	%
<u>Yes</u>	<u>156</u>	<u>26.0%</u>
Definitely yes	73	12.2%
Probably yes	83	13.8%
<u>No</u>	<u>387</u>	<u>64.6%</u>
Probably no	67	11.1%
Definitely no	321	53.5%
Unsure	57	9.5%
Total	600	100.0%

NC State Leg Contrast

13. Thinking about elections for the North Carolina State Legislature, which statement comes closer to the way you think?

	Freq.	%
Since the Governor is a Democrat, we need Republicans in charge of the State Legislature to act as a check-and-balance on the Governor and his agenda	304	50.6%
Since the Governor is a Democrat, we need Democrats in charge of the legislature to help support the Governor's agenda	237	39.5%
Unsure	59	9.9%
Total	600	100.0%

Inflation Primary Issue

14. Do you agree or disagree with the following statement: "Inflation is a primary issue influencing my vote in this year's elections."

	Freq.	%
<u>Agree</u>	<u>388</u>	<u>64.7%</u>
Strongly agree	258	43.0%
Somewhat agree	130	21.7%



<u>Neither agree nor disagree</u>	<u>57</u>	<u>9.5%</u>
<u>Disagree</u>	<u>145</u>	<u>24.2%</u>
Somewhat disagree	56	9.3%
Strongly disagree	89	14.9%
Unsure	9	1.6%
Total	600	100.0%

Abortion Primary Issue

15. Do you agree or disagree with the following statement: “Abortion is a primary issue influencing my vote in this year’s elections.”

	Freq.	%
<u>Agree</u>	<u>346</u>	<u>57.6%</u>
Strongly agree	249	41.6%
Somewhat agree	96	16.1%
<u>Neither agree nor disagree</u>	<u>72</u>	<u>12.0%</u>
<u>Disagree</u>	<u>173</u>	<u>28.8%</u>
Somewhat disagree	52	8.6%
Strongly disagree	121	20.2%
Unsure	9	1.5%
Total	600	100.0%

Top Priority

16. Which of the following is the most important issue for you?

	Freq.	%
The economy	185	30.8%
Abortion	110	18.3%
Inflation	90	14.9%
Healthcare	52	8.6%
The environment	39	6.4%
Crime	36	6.0%
Guns	36	6.1%
Foreign policy	22	3.6%
Energy	9	1.5%
Unsure	22	3.7%
Total	600	100.0%

State of US Economy

17. How would you describe the current state of the American economy?

	Freq.	%
Great	8	1.3%
Good	66	11.1%
Fair	204	34.0%
Poor	322	53.6%
Total	600	100.0%



Food Prices

18. How concerned are you about the current price of food?

	Freq.	%
<u>Concerned</u>	<u>531</u>	<u>88.5%</u>
Very concerned	365	60.8%
Somewhat concerned	166	27.7%
<u>Not Concerned</u>	<u>62</u>	<u>10.3%</u>
Not very concerned	47	7.8%
Not concerned at all	15	2.5%
Unsure	7	1.2%
Total	600	100.0%

Food 1 Year Ago

19. Compared to a year ago, do you believe the price of food has gotten more expensive, less expensive, or stayed about the same?

	Freq.	%
<u>More expensive</u>	<u>565</u>	<u>94.2%</u>
Much more expensive	423	70.6%
Somewhat more expensive	142	23.6%
<u>Stayed about the same</u>	<u>17</u>	<u>2.8%</u>
<u>Less expensive</u>	<u>15</u>	<u>2.4%</u>
Somewhat less expensive	6	1.0%
Much less expensive	9	1.5%
Unsure	4	0.6%
Total	600	100.0%

Food 1 Year From Now

20. A year from today, do you believe the amount you will spend on groceries will be higher, lower, or stay about the same?

	Freq.	%
<u>Higher</u>	<u>397</u>	<u>66.2%</u>
Much higher	219	36.6%
Somewhat higher	178	29.6%
<u>Stay about the same</u>	<u>113</u>	<u>18.9%</u>
<u>Lower</u>	<u>50</u>	<u>8.4%</u>
Somewhat lower	39	6.5%
Much lower	11	1.9%
Unsure	40	6.6%
Total	600	100.0%



Spending Habit Change

21. Has the cost of groceries in 2022 caused you to change your spending habits a lot, a little, or not at all?

	Freq.	%
A lot	284	47.3%
A little	220	36.6%
None at all	93	15.5%
Unsure	3	0.5%
Total	600	100.0%

22. Are you female or male?

	Freq.	%
Female	331	55.2%
Male	269	44.8%
Total	600	100.0%

23. What age range do you fall within?

	Freq.	%
<u>Under 50</u>	<u>229</u>	<u>38.2%</u>
18 - 34	100	16.6%
35 - 49	130	21.6%
<u>50 and Over</u>	<u>371</u>	<u>61.8%</u>
50 - 64	170	28.4%
65 or older	200	33.4%
Total	600	100.0%

24. How are you registered to vote in North Carolina? You may consider yourself of a different party, but what does your voter registration card show?

	Freq.	%
Republican	199	33.1%
Democrat	218	36.4%
Unaffiliated or Independent	176	29.3%
Another party	3	0.6%
Unsure	4	0.6%
Total	600	100.0%

25. And thinking about your views toward politics and government, would you say you are...

	Freq.	%
<u>Conservative</u>	<u>286</u>	<u>47.7%</u>
Very conservative	154	25.6%
Somewhat conservative	133	22.1%
<u>Moderate</u>	<u>144</u>	<u>23.9%</u>
<u>Liberal</u>	<u>154</u>	<u>25.7%</u>
Somewhat liberal	77	12.8%
Very liberal	78	12.9%



Unsure	16	2.7%
Total	600	100.0%

26. Do you consider the area where you live to be more rural, suburban, or urban?

	Freq.	%
Rural	255	42.5%
Suburban	252	42.1%
Urban	92	15.4%
Total	600	100.0%

27. What annual household income range do you fall within out of the following options?

	Freq.	%
Less than \$50,000	171	28.6%
\$50,000 - \$100,000	219	36.5%
More than \$100,000	149	24.8%
Unsure / refused	61	10.1%
Total	600	100.0%

28. Which of the following best describes your race or ethnicity?

	Freq.	%
White or Caucasian	405	67.5%
Asian or Pacific Islander	1	0.2%
Black or African American	127	21.2%
Hispanic or Latino	13	2.1%
Other	37	6.1%
Unsure	17	2.9%
Total	600	100.0%

29. How long have you lived in North Carolina?

	Freq.	%
Less than 2 years	10	1.7%
Between 2-5 years	54	9.0%
Between 5-10 years	55	9.1%
Between 10-20 years	80	13.3%
20 years or more	203	33.9%
All my life	198	33.0%
Total	600	100.0%

30. Thinking back, who did you vote for in the 2020 election for President?

	Freq.	%
Republican Donald Trump	291	48.5%
Democrat Joe Biden	277	46.2%
Another candidate	12	2.0%
Did not vote	11	1.9%
Unsure	9	1.4%
Total	600	100.0%



31. What's the highest level of education you have completed?

	Freq.	%
<u>No degree</u>	348	57.9%
Some high school	8	1.4%
High school diploma/GED	80	13.4%
Technical Certification	31	5.1%
Some college or Associate's Degree	228	38.0%
<u>At least College</u>	251	41.8%
Four-year undergraduate or Bachelor's Degree	146	24.4%
Graduate degree or further	105	17.4%
Unsure	2	0.3%
Total	600	100.0%

32. General Election X of 4

	Freq.	%
0 of 4	12	2.1%
1 of 4	74	12.4%
2 of 4	66	11.0%
3 of 4	136	22.7%
4 of 4	311	51.9%
Total	600	100.0%

33. Geo – DMA

	Freq.	%
<u>Charlotte/West</u>	215	35.8%
Charlotte	150	24.9%
Green/Spart/Ash	64	10.6%
Chattanooga	1	0.2%
<u>Central</u>	113	18.9%
Grsbro/Wnsal/Hpt	110	18.3%
Florence/Myrtle	3	0.5%
<u>Raleigh/Durham</u>	185	30.8%
<u>Coastal</u>	87	14.5%
Green/Nw Brn/Wsh	37	6.2%
Norfolk	12	2.1%
Wilmington	38	6.3%
Total	600	100.0%

34. Geo – 2022 Congressional District

	Freq.	%
1	35	5.9%
2	26	4.3%
3	36	6.0%
4	51	8.6%



5	45	7.5%
6	41	6.8%
7	46	7.7%
8	54	9.0%
9	57	9.4%
10	43	7.1%
11	62	10.4%
12	28	4.6%
13	44	7.3%
14	32	5.3%
Total	600	100.0%

35. Geo - Old Congressional District

	Freq.	%
1	32	5.3%
2	38	6.3%
3	40	6.6%
4	53	8.9%
5	52	8.7%
6	39	6.4%
7	59	9.8%
8	61	10.1%
9	39	6.5%
10	45	7.6%
11	62	10.4%
12	38	6.4%
13	42	7.0%
Total	600	100.0%

36. Age + Income

	Freq.	%
<65 <\$50k	84	13.9%
<65 \$50k-\$100k	163	27.1%
<65 \$100k+	121	20.2%
65+ <\$50k	88	14.6%
65+ \$50k-\$100k	56	9.4%
65+ \$100k+	27	4.6%
Unsure	61	10.1%
Total	600	100.0%

37. Gender + Age

	Freq.	%
F 18 - 34	48	7.9%
F 35 - 49	72	12.0%
F 50 - 64	90	14.9%
F 65+	122	20.3%
M 18 - 34	52	8.7%
M 35 - 49	57	9.6%
M 50 - 64	81	13.5%
M 65+	79	13.1%
Total	600	100.0%



38. Race + Gender

	Freq.	%
White Female	225	37.6%
White Male	180	30.0%
Asian Male	1	0.2%
Black Female	77	12.8%
Black Male	50	8.4%
Hispanic Female	6	1.0%
Hispanic Male	7	1.2%
Other Female	15	2.6%
Other Male	21	3.5%
Unsure	17	2.9%
Total	600	100.0%

39. Gender + Education

	Freq.	%
Female At least College	149	24.8%
Female No degree	182	30.4%
Male At least College	102	17.0%
Male No degree	165	27.5%
Unsure	2	0.3%
Total	600	100.0%

40. Partisanship + Age

	Freq.	%
Republican 18-34	22	3.7%
Republican 35-49	42	7.0%
Republican 50-64	63	10.5%
Republican 65+	71	11.9%
Democrat 18-34	30	5.1%
Democrat 35-49	44	7.4%
Democrat 50-64	57	9.5%
Democrat 65+	87	14.5%
Unaffiliated 18-34	45	7.5%
Unaffiliated 35-49	43	7.2%
Unaffiliated 50-64	47	7.9%
Unaffiliated 65+	40	6.7%
Another party 18-34	1	0.2%
Another party 50-64	1	0.2%
Another party 65+	1	0.2%
Unsure	4	0.6%
Total	600	100.0%

41. Partisanship + Gender

	Freq.	%
Republican Female	104	17.3%
Republican Male	95	15.8%
Democrat Female	139	23.2%



Democrat Male	79	13.2%
Unaffiliated Female	83	13.9%
Unaffiliated Male	93	15.5%
Another party Female	2	0.3%
Another party Male	2	0.3%
Unsure	4	0.6%
Total	600	100.0%

METHODOLOGY

This probabilistic survey was conducted October 20 – 22, 2022, with 600 likely general election voters. It has a margin of error of $\pm 3.99\%$. Known registered voters were interviewed via live phones and SMS. This survey was weighted to a likely general election voter universe.

ABOUT THE FIRM

[Cygnal](#) is an award-winning international polling, public opinion, and predictive analytics firm that pioneered multi-mode polling, text-to-web collection, and emotive analysis. Cygnal consistently ranks as the most accurate firm, and clients rely on Cygnal’s ability to create intelligence for action. Its team members have worked in 48 states and multiple countries on more than 2,700 corporate, public affairs, and political campaigns

