

CYGNAL

Survey of Likely General Election Voters

North Carolina Statewide

Conducted March 26 -27, 2023

n=605 | $\pm 3.98\%$

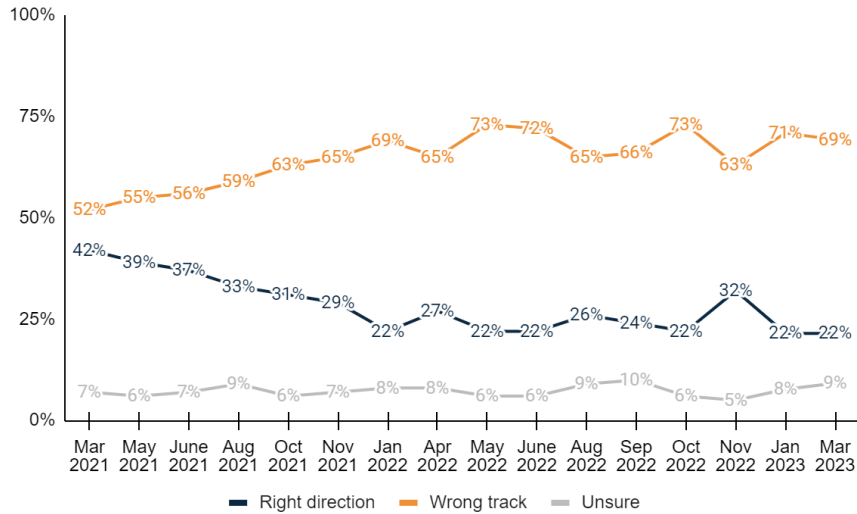
Vote Method

- How do you plan to vote in the 2024 general election for President, Congress, and state offices?

	Freq.	%	Jan 2023
<u>Vote in-person on Election Day</u>	<u>238</u>	<u>39.3%</u>	<u>37.9%</u>
Definitely vote in-person on Election Day	169	27.9%	27.2%
Probably vote in-person on Election Day	69	11.4%	10.7%
<u>Vote absentee by mail</u>	<u>54</u>	<u>9.0%</u>	<u>9.5%</u>
Definitely vote absentee by mail	21	3.5%	5.4%
Probably vote absentee by mail	33	5.5%	4.1%
<u>Vote early in-person</u>	<u>313</u>	<u>51.7%</u>	<u>52.5%</u>
Definitely vote early in-person	181	29.9%	26.1%
Probably vote early in-person	132	21.8%	26.5%
Total	605	100.0%	100.0%

RD/WT

- Generally speaking, would you say things in United States are headed in the right direction or off on the wrong track?



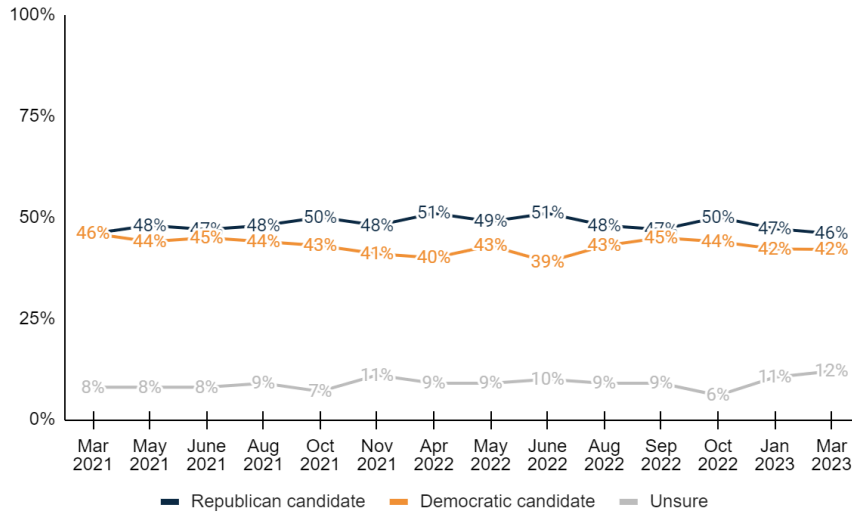
	Freq.	%	Jan 2023	Nov 2022	Oct 2022	Sep 2022	Aug 2022
<u>Right direction</u>	<u>130</u>	<u>21.5%</u>	<u>21.5%</u>	<u>32.0%</u>	<u>21.6%</u>	<u>24.0%</u>	<u>26.4%</u>
Definitely the right direction	23	3.8%	3.5%	6.2%	6.3%	6.3%	7.2%
Mostly the right direction	107	17.7%	18.0%	25.8%	15.4%	17.8%	19.2%
<u>Wrong track</u>	<u>419</u>	<u>69.3%</u>	<u>70.9%</u>	<u>62.6%</u>	<u>72.5%</u>	<u>66.3%</u>	<u>64.8%</u>
Mostly the wrong track	130	21.5%	20.1%	14.0%	16.7%	15.8%	14.4%



Definitely the wrong track	289	47.8%	50.7%	48.7%	55.8%	50.6%	50.4%
Unsure	56	9.2%	7.7%	5.4%	5.9%	9.6%	8.8%
Total	605	100.0%	100.0%	100.0%	100.0%	100.0%	100.0%

Generic State Lege Ballot

3. If the 2024 election was held today, and you had to make a choice, would you vote for the Republican or Democratic candidate for the North Carolina State Legislature?



	Freq.	%	Jan 2023	Oct 2022	Sep 2022	Aug 2022
Republican candidate	278	46.0%	47.2%	50.1%	46.6%	47.9%
Definitely the Republican candidate	214	35.4%	37.1%	45.5%	37.7%	42.3%
Probably the Republican candidate	64	10.6%	10.2%	4.6%	8.9%	5.6%
Democratic candidate	255	42.1%	42.2%	43.9%	44.5%	42.9%
Probably the Democratic candidate	59	9.8%	8.2%	5.2%	8.2%	6.6%
Definitely the Democratic candidate	195	32.3%	34.1%	38.7%	36.2%	36.4%
Unsure	72	12.0%	10.5%	6.0%	8.9%	9.2%
Total	605	100.0%	100.0%	100.0%	100.0%	100.0%

Generic Gov Ballot

4. If the 2024 election was held today, and you had to make a choice, would you vote for the Republican or Democratic candidate for Governor?

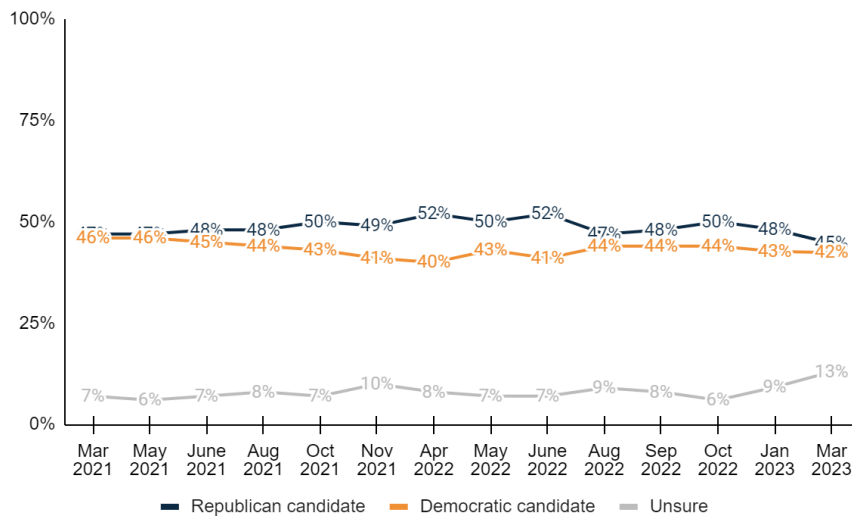
	Freq.	%
Republican candidate	274	45.3%
Definitely the Republican candidate	204	33.8%
Probably the Republican candidate	70	11.5%



Democratic candidate	260	43.0%
Probably the Democratic candidate	57	9.4%
Definitely the Democratic candidate	203	33.5%
Unsure	71	11.7%
Total	605	100.0%

Generic Congress Ballot

5. And, regardless of how you would vote at the state level, if the 2024 election for United States Congress was held today, and you had to make a choice, would you vote for the Republican candidate or the Democratic candidate?

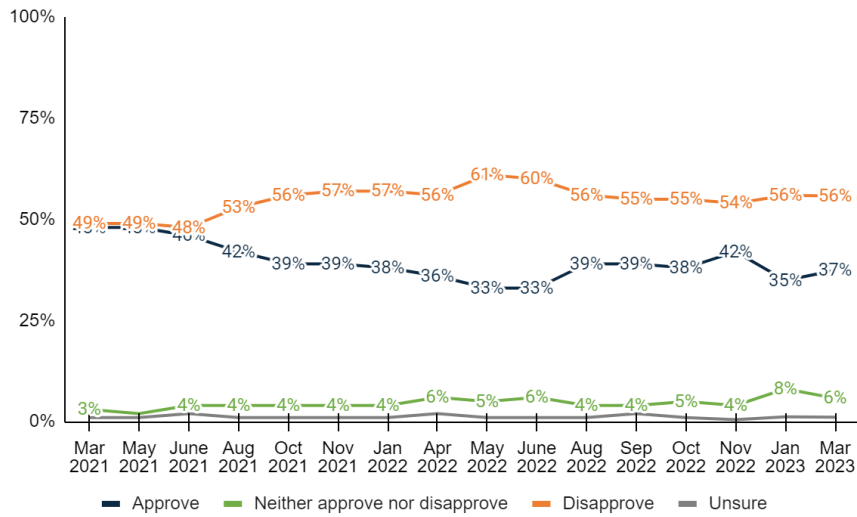


	Freq.	%	Jan 2023	Oct 2022	Sep 2022	Aug 2022
Republican candidate	270	44.7%	48.1%	50.3%	47.5%	47.3%
Definitely the Republican candidate	208	34.4%	37.7%	45.5%	38.1%	41.5%
Probably the Republican candidate	62	10.3%	10.3%	4.8%	9.3%	5.8%
Democratic candidate	256	42.4%	42.7%	44.2%	44.2%	44.0%
Probably the Democratic candidate	61	10.1%	9.2%	4.3%	6.5%	6.7%
Definitely the Democratic candidate	195	32.3%	33.5%	39.9%	37.7%	37.3%
Unsure	78	13.0%	9.2%	5.5%	8.3%	8.7%
Total	605	100.0%	100.0%	100.0%	100.0%	100.0%



Biden Job Approval

6. Do you approve or disapprove of the job that Joe Biden is doing as President?



	Freq.	%	Jan 2023	Nov 2022	Oct 2022	Sep 2022	Aug 2022
Approve	226	37.4%	34.9%	41.9%	38.4%	39.3%	38.7%
Strongly approve	93	15.4%	14.8%	18.7%	20.3%	17.5%	22.9%
Somewhat approve	133	21.9%	20.1%	23.2%	18.1%	21.8%	15.8%
Neither approve nor disapprove	35	5.8%	8.1%	3.5%	5.4%	4.2%	4.3%
Disapprove	338	55.8%	55.9%	54.0%	55.3%	54.9%	56.1%
Somewhat disapprove	40	6.7%	8.1%	5.5%	4.8%	7.1%	6.1%
Strongly disapprove	297	49.1%	47.8%	48.5%	50.5%	47.9%	49.9%
Unsure	6	1.1%	1.2%	0.5%	0.9%	1.5%	0.9%
Total	605	100.0%	100.0%	100.0%	100.0%	100.0%	100.0%

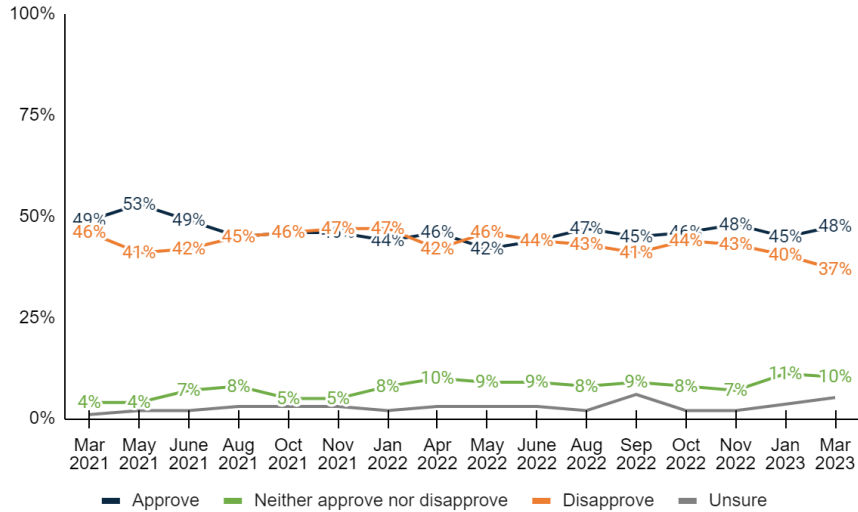
Cooper Job Approval

7. Do you approve or disapprove of the job that Roy Cooper is doing as Governor?

	Freq.	%	Jan 2023	Nov 2022	Oct 2022	Sep 2022	Aug 2022
Approve	288	47.6%	44.9%	47.9%	46.4%	45.0%	46.8%
Strongly approve	133	22.0%	26.2%	33.4%	30.4%	30.1%	32.1%
Somewhat approve	155	25.5%	18.7%	14.5%	16.0%	15.0%	14.6%
Neither approve nor disapprove	62	10.3%	11.1%	7.4%	7.9%	8.5%	7.5%
Disapprove	223	36.9%	40.4%	42.6%	43.5%	40.7%	43.3%
Somewhat disapprove	91	15.1%	18.7%	14.4%	12.4%	13.5%	12.7%
Strongly disapprove	132	21.9%	21.7%	28.2%	31.0%	27.1%	30.6%



Unsure	32	5.2%	3.6%	2.1%	2.3%	5.8%	2.4%
Total	605	100.0%	100.0%	100.0%	100.0%	100.0%	100.0%



Thinking now about the 2024 presidential election...

Biden v DeSantis

8. If the 2024 general election for President was held today, and you had to make a choice based on these options, who would you vote for?

	Freq.	%
<u>Democrat Joe Biden</u>	<u>248</u>	<u>41.0%</u>
Definitely Democrat Joe Biden	195	32.3%
Probably Democrat Joe Biden	52	8.7%
<u>Republican Ron DeSantis</u>	<u>264</u>	<u>43.6%</u>
Probably Republican Ron DeSantis	59	9.8%
Definitely Republican Ron DeSantis	205	33.9%
Undecided	93	15.4%
Total	605	100.0%

Biden v Trump

9. If the 2024 general election for President was held today, and you had to make a choice based on these options, who would you vote for?

	Freq.	%
<u>Democrat Joe Biden</u>	<u>275</u>	<u>45.4%</u>
Definitely Democrat Joe Biden	249	41.2%
Probably Democrat Joe Biden	25	4.2%



Republican Donald Trump	262	43.4%
Probably Republican Donald Trump	59	9.7%
Definitely Republican Donald Trump	204	33.7%
Undecided	68	11.2%
Total	605	100.0%

Biden v Pence

10. If the 2024 general election for President was held today, and you had to make a choice based on these options, who would you vote for?

	Freq.	%
Democrat Joe Biden	250	41.4%
Definitely Democrat Joe Biden	209	34.5%
Probably Democrat Joe Biden	41	6.8%
Republican Mike Pence	238	39.4%
Probably Republican Mike Pence	80	13.2%
Definitely Republican Mike Pence	158	26.2%
Undecided	117	19.3%
Total	605	100.0%

Election Integrity

11. Do you believe next year's elections in North Carolina will be free and fair?

	Freq.	%
Free and fair	357	59.1%
Definitely free and fair	153	25.3%
Probably free and fair	204	33.7%
Not free and fair	167	27.7%
Probably not free and fair	117	19.3%
Definitely not free and fair	50	8.3%
Unsure	80	13.3%
Total	605	100.0%

Voter ID

12. Do you agree or disagree with this statement: "Every person that votes in-person in North Carolina should present photo identification before voting"?

	Freq.	%	Apr 2022
Agree	413	68.3%	67.9%
Strongly agree	338	55.9%	57.6%
Somewhat agree	75	12.4%	10.3%



<u>Neither agree nor disagree</u>	<u>38</u>	<u>6.2%</u>	<u>7.5%</u>
<u>Disagree</u>	<u>143</u>	<u>23.6%</u>	<u>23.6%</u>
Somewhat disagree	50	8.3%	5.9%
Strongly disagree	93	15.3%	17.7%
Unsure	12	1.9%	1.0%
Total	605	100.0%	100.0%

Thinking now about the environment...

Environment News Description

13. Thinking about what is said in the news, in your view, is news regarding the state of our environment generally positive, generally negative, or neutral?

	Freq.	%
<u>Positive</u>	<u>37</u>	<u>6.2%</u>
All positive	4	0.7%
Mostly positive	33	5.4%
<u>Even mix of positive and negative</u>	<u>171</u>	<u>28.2%</u>
<u>Negative</u>	<u>342</u>	<u>56.5%</u>
Mostly negative	265	43.8%
All negative	76	12.6%
Unsure	56	9.2%
Total	605	100.0%

Environment Issues

14. Which of the following environmental issues most concerns you?

	Freq.	%
Water pollution	128	21.1%
Air pollution	30	5.0%
Natural disasters/tropical storms/wildfires	92	15.2%
Climate change	157	25.9%
Waste management	55	9.0%
Weak international environmental standards	48	7.9%
Over-fishing and habitat loss	26	4.3%
Unsure	70	11.5%
Total	605	100.0%



NC Environment Clean

15. Do you believe the environment in North Carolina is more clean or less clean than in 2005?

	Freq.	%
<u>Cleaner than 2005</u>	<u>171</u>	<u>28.3%</u>
Definitely cleaner than 2005	33	5.5%
Probably cleaner than 2005	138	22.8%
<u>Less clean than 2005</u>	<u>279</u>	<u>46.2%</u>
Probably less clean than 2005	177	29.2%
Definitely less clean than 2005	103	17.0%
Unsure	154	25.5%
Total	605	100.0%

US Environment Clean

16. Do you believe the environment in United States is more clean or less clean than in 2005?

	Freq.	%
<u>Cleaner than 2005</u>	<u>174</u>	<u>28.8%</u>
Definitely cleaner than 2005	26	4.3%
Probably cleaner than 2005	148	24.5%
<u>Less clean than 2005</u>	<u>327</u>	<u>54.0%</u>
Probably less clean than 2005	173	28.6%
Definitely less clean than 2005	154	25.4%
Unsure	104	17.2%
Total	605	100.0%

Thinking now about the North Carolina Constitution...

Right to Work Amendment

17. Would you support or oppose a state constitutional amendment to provide that the right to live includes the right to work, and therefore the right of persons to work shall not be denied or abridged on account of membership or non-membership, or payment or non-payment, in any labor organization?

	Freq.	%
<u>Support amendment</u>	<u>329</u>	<u>54.4%</u>
Strongly support amendment	203	33.5%
Somewhat support amendment	126	20.8%
<u>Neither support nor oppose amendment</u>	<u>77</u>	<u>12.7%</u>
<u>Oppose amendment</u>	<u>86</u>	<u>14.3%</u>
Somewhat oppose amendment	28	4.6%
Strongly oppose amendment	58	9.6%



Unsure	113	18.6%
Total	605	100.0%

Taxpayer Protection Amendment

18. Would you support or oppose a state constitutional amendment adding the Taxpayer Protection Act to the North Carolina Constitution that would limit the growth of State spending to inflation plus population growth, require yearly deposits in a Savings Reserve or Unfunded Liability Reserve, return excess revenue to taxpayers, and submit tax increases to a vote of the people?

	Freq.	%
<u>Support amendment</u>	<u>343</u>	<u>56.7%</u>
Strongly support amendment	190	31.3%
Somewhat support amendment	153	25.3%
<u>Neither support nor oppose amendment</u>	<u>53</u>	<u>8.7%</u>
<u>Oppose amendment</u>	<u>68</u>	<u>11.2%</u>
Somewhat oppose amendment	30	4.9%
Strongly oppose amendment	38	6.3%
Unsure	142	23.4%
Total	605	100.0%

Literacy Test Amendment

19. Would you support or oppose a state constitutional amendment to remove the literacy test requirement for voting from the North Carolina Constitution? The federal Voting Rights Act of 1965 prohibits the implementation of this requirement.

	Freq.	%
<u>Support amendment</u>	<u>253</u>	<u>41.8%</u>
Strongly support amendment	175	28.9%
Somewhat support amendment	78	13.0%
<u>Neither support nor oppose amendment</u>	<u>70</u>	<u>11.5%</u>
<u>Oppose amendment</u>	<u>169</u>	<u>28.0%</u>
Somewhat oppose amendment	51	8.4%
Strongly oppose amendment	119	19.6%
Unsure	113	18.7%
Total	605	100.0%



Citizen Voting Amendment

20. Would you support or oppose a state constitutional amendment to modify the North Carolina Constitution to clarify that only United States citizens may vote in North Carolina?

	Freq.	%
<u>Support amendment</u>	<u>428</u>	<u>70.8%</u>
Strongly support amendment	363	59.9%
Somewhat support amendment	66	10.8%
<u>Neither support nor oppose amendment</u>	<u>45</u>	<u>7.5%</u>
<u>Oppose amendment</u>	<u>90</u>	<u>14.9%</u>
Somewhat oppose amendment	40	6.6%
Strongly oppose amendment	50	8.3%
Unsure	42	6.9%
Total	605	100.0%

Property Condemnation Amendment

21. Would you support or oppose a state constitutional amendment to prohibit condemnation of private property except for a public use and to provide for the payment of just compensation with right of trial by jury in all condemnation cases?

	Freq.	%
<u>Support amendment</u>	<u>258</u>	<u>42.7%</u>
Strongly support amendment	132	21.8%
Somewhat support amendment	126	20.9%
<u>Neither support nor oppose amendment</u>	<u>79</u>	<u>13.0%</u>
<u>Oppose amendment</u>	<u>55</u>	<u>9.0%</u>
Somewhat oppose amendment	21	3.6%
Strongly oppose amendment	33	5.5%
Unsure	214	35.3%
Total	605	100.0%

22. Are you female or male?

	Freq.	%
Female	333	55.0%
Male	272	45.0%
Total	605	100.0%



23. What age range do you fall within?

	Freq.	%
<u>Under 50</u>	<u>249</u>	<u>41.2%</u>
18 - 34	114	18.8%
35 - 49	135	22.3%
<u>50 and Over</u>	<u>356</u>	<u>58.8%</u>
50 - 64	171	28.3%
65 or older	185	30.6%
Total	605	100.0%

24. How are you registered to vote in North Carolina? You may consider yourself of a different party, but what does your voter registration card show?

	Freq.	%
Republican	196	32.5%
Democrat	212	35.0%
Independent/Other	179	29.7%
Unsure	17	2.8%
Total	605	100.0%

25. And thinking about your views toward politics and government, would you say you are...

	Freq.	%
<u>Conservative</u>	<u>266</u>	<u>44.0%</u>
Very conservative	136	22.4%
Somewhat conservative	130	21.6%
<u>Moderate</u>	<u>171</u>	<u>28.3%</u>
<u>Liberal</u>	<u>150</u>	<u>24.9%</u>
Somewhat liberal	91	15.1%
Very liberal	59	9.8%
Unsure	17	2.8%
Total	605	100.0%

26. Do you consider the area where you live to be more rural, suburban, or urban?

	Freq.	%
Rural	267	44.2%
Suburban	252	41.6%
Urban	86	14.2%
Total	605	100.0%



27. What annual household income range do you fall within out of the following options?

	Freq.	%
Less than \$40,000	103	17.0%
\$40,000 - \$69,999	140	23.1%
\$70,000 - \$99,999	117	19.3%
\$100,000 or more	197	32.5%
Unsure	49	8.1%
Total	605	100.0%

28. Which of the following best describes your race or ethnicity?

	Freq.	%
White or Caucasian	430	71.0%
Asian or Pacific Islander	5	0.8%
Black or African American	126	20.8%
Hispanic or Latino	8	1.3%
Other	23	3.8%
Unsure	14	2.3%
Total	605	100.0%

29. Thinking back, who did you vote for in the 2020 election for President?

	Freq.	%
Republican Donald Trump	284	46.9%
Democrat Joe Biden	278	45.9%
Another candidate	13	2.2%
Did not vote	12	2.0%
Unsure	18	3.1%
Total	605	100.0%

30. What's the highest level of education you have completed?

	Freq.	%
<u>No degree</u>	<u>340</u>	<u>56.2%</u>
Some high school	10	1.7%
High school diploma/GED	80	13.3%
Technical Certification	32	5.3%
Some college or Associate's Degree	218	36.0%
<u>At least College</u>	<u>262</u>	<u>43.3%</u>
Four-year undergraduate or Bachelor's Degree	152	25.1%
Graduate degree or further	110	18.2%
Unsure	3	0.5%
Total	605	100.0%



31. General Election X of 4

	Freq.	%
0 of 4	9	1.5%
1 of 4	93	15.4%
2 of 4	114	18.8%
3 of 4	105	17.3%
4 of 4	284	47.0%
Total	605	100.0%

32. Geo – Congressional District

	Freq.	%
1	39	6.4%
2	15	2.5%
3	43	7.1%
4	59	9.8%
5	61	10.1%
6	40	6.6%
7	59	9.7%
8	38	6.3%
9	50	8.3%
10	49	8.1%
11	74	12.2%
12	19	3.1%
13	38	6.2%
14	21	3.5%
Total	605	100.0%

33. Geo – DMA

	Freq.	%
<u>Charlotte/West</u>	<u>218</u>	<u>36.0%</u>
Charlotte	139	22.9%
Greenville-Spart-Ashevil-And	72	11.9%
Chattanooga	7	1.1%
Atlanta	1	0.1%
<u>Central</u>	<u>113</u>	<u>18.8%</u>
Greensboro-H.Point-W.Salem	105	17.3%
Myrtle Beach-Florence	9	1.4%
<u>Raleigh-Durham (Fayetteville)</u>	<u>187</u>	<u>30.9%</u>
<u>Coastal</u>	<u>87</u>	<u>14.3%</u>
Greenville-N.Bern-Washngtn	35	5.8%
Wilmington	39	6.4%
Norfolk-Portsmth-Newpt Nws	13	2.2%
Total	605	100.0%



34. Age + Income

	Freq.	%
<65 <\$40k	70	11.5%
<65 \$40k-\$70k	97	16.1%
<65 \$70k-\$100k	80	13.2%
<65 \$100k+	151	24.9%
65+ <\$40k	33	5.5%
65+ \$40k-\$70k	43	7.1%
65+ \$70k-\$100k	37	6.1%
65+ \$100k+	46	7.6%
Unsure	49	8.1%
Total	605	100.0%

35. Gender + Age

	Freq.	%
F 18 - 34	62	10.2%
F 35 - 49	69	11.4%
F 50 - 64	95	15.8%
F 65+	107	17.7%
M 18 - 34	52	8.7%
M 35 - 49	66	11.0%
M 50 - 64	76	12.5%
M 65+	78	12.9%
Total	605	100.0%

36. Race + Gender

	Freq.	%
White Female	236	39.0%
White Male	194	32.0%
Asian Female	2	0.3%
Asian Male	3	0.5%
Black Female	68	11.2%
Black Male	58	9.6%
Hispanic Female	3	0.6%
Hispanic Male	5	0.8%
Other Female	14	2.3%
Other Male	9	1.5%
Unsure	14	2.3%
Total	605	100.0%

37. Gender + Education

	Freq.	%
Female At least College	161	26.6%
Female No degree	169	27.9%
Male At least College	101	16.7%



Male No degree	171	28.3%
Unsure	3	0.5%
Total	605	100.0%

38. Partisanship + Age

	Freq.	%
Republican 18-34	37	6.1%
Republican 35-49	32	5.2%
Republican 50-64	57	9.4%
Republican 65+	71	11.7%
Democrat 18-34	36	6.0%
Democrat 35-49	48	8.0%
Democrat 50-64	60	9.9%
Democrat 65+	68	11.2%
Independent/Other 18-34	37	6.1%
Independent/Other 35-49	47	7.8%
Independent/Other 50-64	51	8.4%
Independent/Other 65+	44	7.3%
Unsure	17	2.8%
Total	605	100.0%

39. Partisanship + Gender

	Freq.	%
Republican Female	102	16.9%
Republican Male	94	15.5%
Democrat Female	120	19.8%
Democrat Male	92	15.2%
Independent/Other Female	102	16.8%
Independent/Other Male	78	12.8%
Unsure	17	2.8%
Total	605	100.0%

METHODOLOGY

This probabilistic survey was conducted March 26 – 27, 2023, with 605 likely general election voters. It has a margin of error of $\pm 3.98\%$. Known registered voters were interviewed via live phones and SMS. This survey was weighted to a likely general election voter universe.

ABOUT THE FIRM

[Cygnal](#) is an award-winning international polling, public opinion, and predictive analytics firm that pioneered multi-mode polling, text-to-web collection, and emotive analysis. Cygnal consistently ranks as the most accurate firm, and clients rely on Cygnal's ability to create intelligence for action. Its team members have worked in 48 states and multiple countries on more than 2,700 corporate, public affairs, and political campaigns.

