

CYNAL

Survey of Likely General Election Voters

North Carolina, Statewide

Conducted May 21 - 23, 2023

n=610 | $\pm 3.96\%$

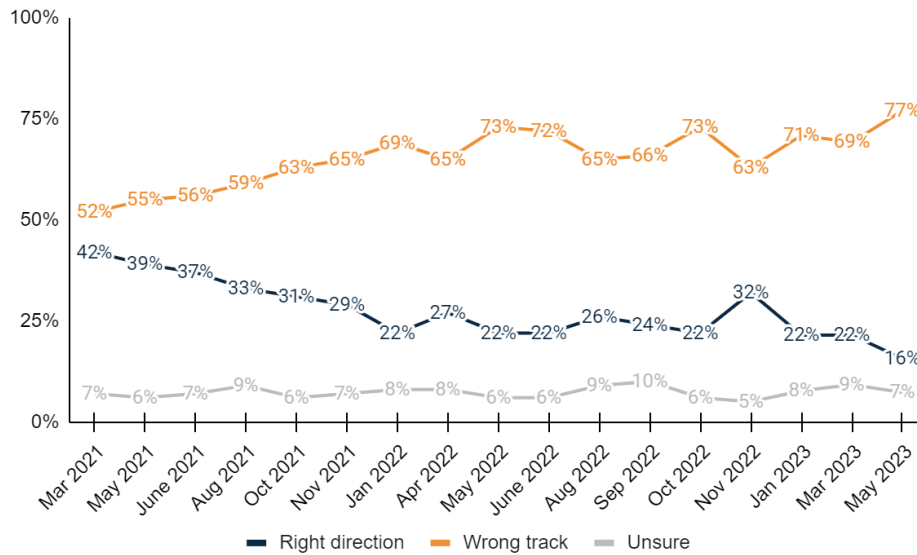
Vote Method

1. How do you plan to vote in the November 2024 general election for Congress?

	Freq.	%	Mar 2023	Jan 2023
<u>Vote in-person on Election Day</u>	260	42.7%	39.3%	37.9%
Definitely vote in-person on Election Day	184	30.1%	27.9%	27.2%
Probably vote in-person on Election Day	77	12.6%	11.4%	10.7%
<u>Vote absentee by mail</u>	43	7.0%	9.0%	9.5%
Definitely vote absentee by mail	17	2.7%	3.5%	5.4%
Probably vote absentee by mail	26	4.3%	5.5%	4.1%
<u>Vote early in-person</u>	307	50.3%	51.7%	52.5%
Definitely vote early in-person	141	23.2%	29.9%	26.1%
Probably vote early in-person	165	27.1%	21.8%	26.5%
Total	610	100.0%	100.0%	100.0%

Direction of Country

2. Do you feel things in the United States are generally headed in the right direction or have things gotten off on the wrong track?



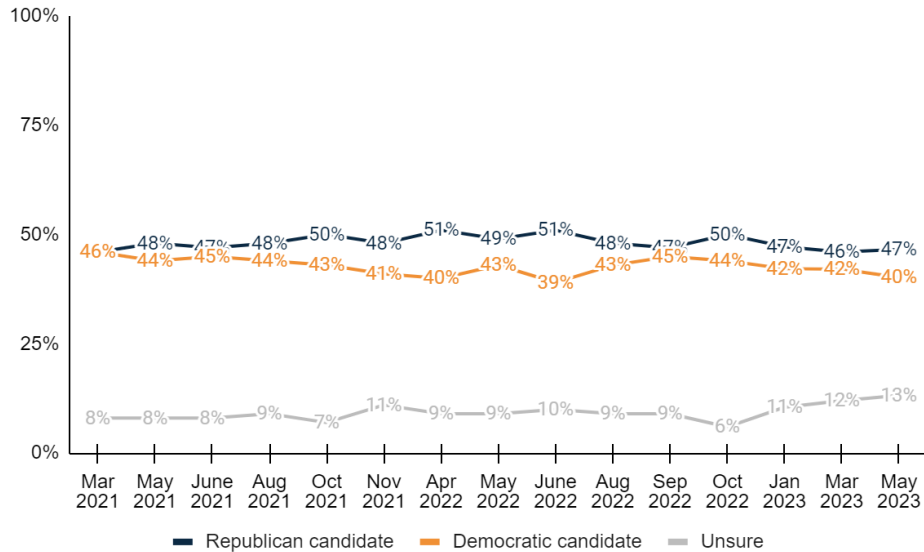
	Freq.	%	Mar 2023	Jan 2023	Nov 2022	Oct 2022	Sep 2022	Aug 2022
<u>Right direction</u>	96	15.7%	21.5%	21.5%	32.0%	21.6%	24.0%	26.4%
Definitely the right direction	18	3.0%	3.8%	3.5%	6.2%	6.3%	6.3%	7.2%
Mostly the right direction	78	12.8%	17.7%	18.0%	25.8%	15.4%	17.8%	19.2%
<u>Wrong track</u>	470	77.0%	69.3%	70.9%	62.6%	72.5%	66.3%	64.8%
Mostly the wrong track	120	19.6%	21.5%	20.1%	14.0%	16.7%	15.8%	14.4%
Definitely the wrong track	350	57.4%	47.8%	50.7%	48.7%	55.8%	50.6%	50.4%



Unsure	44	7.3%	9.2%	7.7%	5.4%	5.9%	9.6%	8.8%
Total	610	100.0%	100.0%	100.0%	100.0%	100.0%	100.0%	100.0%

Generic Legislative Ballot

3. If the 2024 election for the North Carolina State Legislature was held today, and you had to make a choice, would you vote for the Republican or Democratic candidate for state legislature?

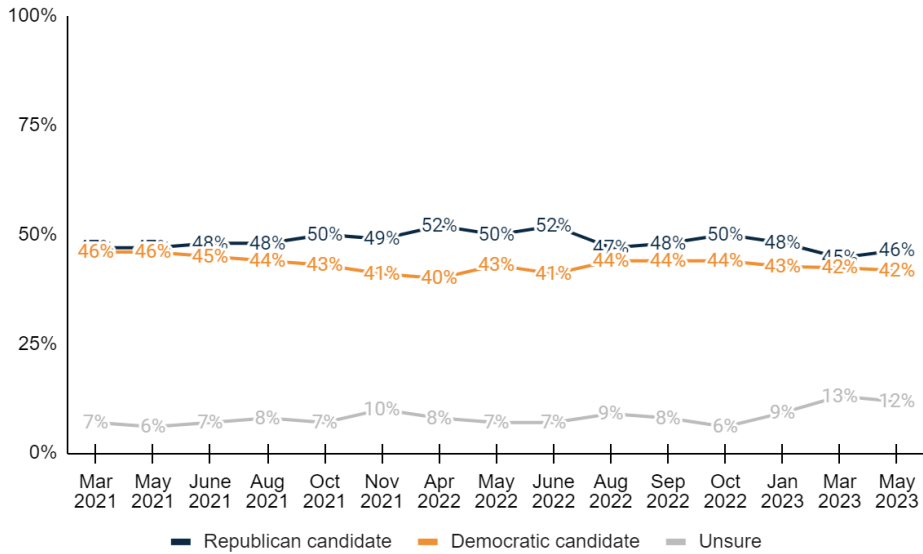


	Freq.	%	Mar 2023	Jan 2023	Nov 2022	Oct 2022	Sep 2022	Aug 2022
Republican candidate	284	46.6%	46.0%	47.2%	50.1%	46.6%	47.9%	46.0%
Definitely the Republican candidate	225	36.8%	35.4%	37.1%	45.5%	37.7%	42.3%	35.4%
Probably the Republican candidate	60	9.8%	10.6%	10.2%	4.6%	8.9%	5.6%	10.6%
Democratic candidate	245	40.2%	42.1%	42.2%	43.9%	44.5%	42.9%	42.1%
Probably the Democratic candidate	54	8.9%	9.8%	8.2%	5.2%	8.2%	6.6%	9.8%
Definitely the Democratic candidate	191	31.3%	32.3%	34.1%	38.7%	36.2%	36.4%	32.3%
Unsure	80	13.2%	12.0%	10.5%	6.0%	8.9%	9.2%	12.0%
Total	610	100.0%	100.0%	100.0%	100.0%	100.0%	100.0%	100.0%

Generic Congressional Ballot

4. And, regardless of how you would vote at the state level, if the 2024 election for United States Congress were held today, and you had to make a choice, would you vote for the Republican or Democratic candidate for Congress?

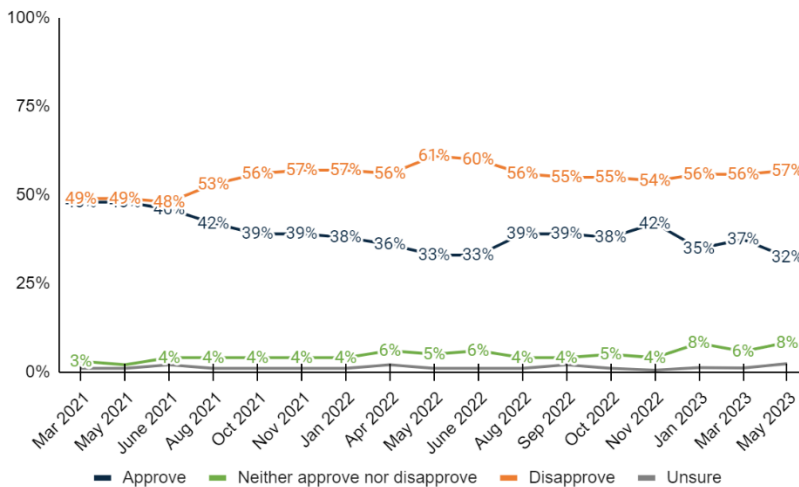




	Freq.	%	Mar 2023	Jan 2023	Oct 2022	Sep 2022	Aug 2022
Republican candidate	283	46.4%	44.7%	48.1%	50.3%	47.5%	47.3%
Definitely the Republican candidate	232	38.0%	34.4%	37.7%	45.5%	38.1%	41.5%
Probably the Republican candidate	51	8.4%	10.3%	10.3%	4.8%	9.3%	5.8%
Democratic candidate	255	41.8%	42.4%	42.7%	44.2%	44.2%	44.0%
Probably the Democratic candidate	56	9.1%	10.1%	9.2%	4.3%	6.5%	6.7%
Definitely the Democratic candidate	200	32.7%	32.3%	33.5%	39.9%	37.7%	37.3%
Unsure	72	11.8%	13.0%	9.2%	5.5%	8.3%	8.7%
Total	610	100.0%	100.0%	100.0%	100.0%	100.0%	100.0%

Biden Job Approval

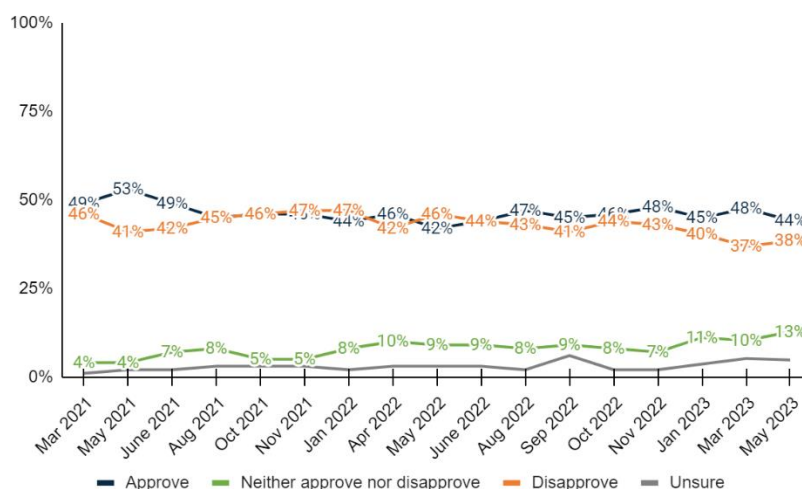
5. Do you approve or disapprove of the job that Joe Biden is doing as President?



	Freq.	%	Mar 2023	Jan 2023	Nov 2022	Oct 2022	Sep 2022	Aug 2022
Approve	198	32.4%	37.4%	34.9%	41.9%	38.4%	39.3%	38.7%
Strongly approve	90	14.8%	15.4%	14.8%	18.7%	20.3%	17.5%	22.9%
Somewhat approve	107	17.6%	21.9%	20.1%	23.2%	18.1%	21.8%	15.8%
Neither approve nor disapprove	51	8.3%	5.8%	8.1%	3.5%	5.4%	4.2%	4.3%
Disapprove	347	56.9%	55.8%	55.9%	54.0%	55.3%	54.9%	56.1%
Somewhat disapprove	52	8.5%	6.7%	8.1%	5.5%	4.8%	7.1%	6.1%
Strongly disapprove	295	48.4%	49.1%	47.8%	48.5%	50.5%	47.9%	49.9%
Unsure	14	2.3%	1.1%	1.2%	0.5%	0.9%	1.5%	0.9%
Total	610	100.0%	100.0%	100.0%	100.0%	100.0%	100.0%	100.0%

Cooper Job Approval

6. Do you approve or disapprove of the job that Roy Cooper is doing as Governor?



	Freq.	%	Mar 2023	Jan 2023	Nov 2022	Oct 2022	Sep 2022	Aug 2022
Approve	269	44.2%	47.6%	44.9%	47.9%	46.4%	45.0%	46.8%
Strongly approve	167	27.4%	22.0%	26.2%	33.4%	30.4%	30.1%	32.1%
Somewhat approve	102	16.8%	25.5%	18.7%	14.5%	16.0%	15.0%	14.6%
Neither approve nor disapprove	78	12.7%	10.3%	11.1%	7.4%	7.9%	8.5%	7.5%
Disapprove	234	38.4%	36.9%	40.4%	42.6%	43.5%	40.7%	43.3%
Somewhat disapprove	76	12.5%	15.1%	18.7%	14.4%	12.4%	13.5%	12.7%
Strongly disapprove	158	25.9%	21.9%	21.7%	28.2%	31.0%	27.1%	30.6%
Unsure	29	4.8%	5.2%	3.6%	2.1%	2.3%	5.8%	2.4%
Total	610	100.0%	100.0%	100.0%	100.0%	100.0%	100.0%	100.0%



Thinking about the 2024 general election...

Stein Folwell Ballot

7. If the 2024 general election for North Carolina’s Governor was held today, and you had to choose based on the following options, who would you vote for?

	Freq.	%
<u>Republican Dale Folwell</u>	<u>206</u>	<u>33.8%</u>
Definitely Republican Dale Folwell	132	21.6%
Probably Republican Dale Folwell	74	12.2%
<u>Democrat Josh Stein</u>	<u>240</u>	<u>39.4%</u>
Probably Democrat Josh Stein	77	12.6%
Definitely Democrat Josh Stein	164	26.8%
Unsure	163	26.8%
Total	610	100.0%

Stein Robinson Ballot

8. If the 2024 general election for North Carolina’s Governor was held today, and you had to choose based on the following options, who would you vote for?

	Freq.	%
<u>Republican Mark Robinson</u>	<u>253</u>	<u>41.5%</u>
Definitely Republican Mark Robinson	194	31.9%
Probably Republican Mark Robinson	59	9.6%
<u>Democrat Josh Stein</u>	<u>249</u>	<u>40.8%</u>
Probably Democrat Josh Stein	72	11.8%
Definitely Democrat Josh Stein	177	29.0%
Unsure	108	17.7%
Total	610	100.0%

Stein Walker Ballot

9. If the 2024 general election for North Carolina’s Governor was held today, and you had to choose based on the following options, who would you vote for?

	Freq.	%
<u>Republican Mark Walker</u>	<u>224</u>	<u>36.8%</u>
Definitely Republican Mark Walker	149	24.4%
Probably Republican Mark Walker	75	12.4%
<u>Democrat Josh Stein</u>	<u>240</u>	<u>39.4%</u>
Probably Democrat Josh Stein	76	12.5%
Definitely Democrat Josh Stein	164	26.9%
Unsure	145	23.8%
Total	610	100.0%



Free and Fair

10. Do you believe this year's elections in North Carolina will be free and fair?

	Freq.	%
<u>Yes</u>	<u>309</u>	<u>50.7%</u>
Definitely yes	131	21.4%
Probably yes	179	29.3%
<u>No</u>	<u>190</u>	<u>31.1%</u>
Probably no	143	23.4%
Definitely no	47	7.7%
Unsure	111	18.2%
Total	610	100.0%

Photo ID

11. Do you agree or disagree with the following statement: "Every person that votes in person in North Carolina should present photo identification before voting?"

	Freq.	%
<u>Agree</u>	<u>400</u>	<u>65.6%</u>
Strongly agree	330	54.2%
Somewhat agree	69	11.4%
<u>Neither agree nor disagree</u>	<u>55</u>	<u>9.0%</u>
<u>Disagree</u>	<u>141</u>	<u>23.2%</u>
Somewhat disagree	46	7.6%
Strongly disagree	95	15.6%
Unsure	14	2.3%
Total	610	100.0%

Present ID

12. The North Carolina State Supreme Court recently ruled that a law passed by the state legislature in 2018 to require voters to present identification when voting in person would become effective for future elections. Do you support or oppose this decision by the state Supreme Court?

	Freq.	%
<u>Support</u>	<u>397</u>	<u>65.2%</u>
Strongly support	329	53.9%
Somewhat support	69	11.3%
<u>Neither support nor oppose</u>	<u>47</u>	<u>7.7%</u>
<u>Oppose</u>	<u>145</u>	<u>23.8%</u>
Somewhat oppose	61	10.0%
Strongly oppose	84	13.7%



Unsure	21	3.4%
Total	610	100.0%

Have ID

13. Do you personally have a government-issued ID, such as an unexpired North Carolina driver's license, United States passport, or state government employee ID card?

	Freq.	%
Yes	587	96.2%
No	20	3.2%
Unsure	3	0.5%
Total	610	100.0%

ID Confidence

14. Does a voter ID requirement make you feel more confident, less confident, or not make much difference regarding the fairness and accuracy of North Carolina's elections?

	Freq.	%
<u>More confident</u>	<u>382</u>	<u>62.7%</u>
Much more confident	252	41.3%
Somewhat more confident	130	21.4%
<u>Makes no difference</u>	<u>149</u>	<u>24.5%</u>
<u>Less confident</u>	<u>61</u>	<u>10.1%</u>
Somewhat less confident	25	4.1%
Much less confident	37	6.0%
Unsure	17	2.8%
Total	610	100.0%

Now thinking about the issue of alcohol sales and consumption...

NC ABC Awareness

15. Are you aware of the North Carolina Alcoholic Beverage Control Commission (NC ABC Commission) and its role in controlling the sale, purchase, transportation, manufacture, consumption, and possession of alcoholic beverages in the state?

	Freq.	%
<u>Aware</u>	<u>459</u>	<u>75.2%</u>
Very aware	228	37.4%
Somewhat aware	231	37.8%
<u>Unaware</u>	<u>132</u>	<u>21.7%</u>
Somewhat unaware	52	8.5%
Very unaware	80	13.1%
Unsure	19	3.1%
Total	610	100.0%



NC ABC Satisfaction

16. How would you rate your overall satisfaction with the NC ABC system?

	Freq.	%
<u>Satisfied</u>	<u>304</u>	<u>49.8%</u>
Very satisfied	87	14.3%
Somewhat satisfied	216	35.4%
<u>Dissatisfied</u>	<u>136</u>	<u>22.3%</u>
Somewhat unsatisfied	72	11.8%
Very unsatisfied	64	10.5%
Unsure	170	27.9%
Total	610	100.0%

NC ABC Effectiveness

17. Do you agree or disagree that the NC ABC system effectively regulates and controls the sale, purchase, and consumption of alcoholic beverages in the state?

	Freq.	%
<u>Agree</u>	<u>283</u>	<u>46.4%</u>
Strongly agree	106	17.3%
Somewhat agree	177	29.1%
<u>Neither agree nor disagree</u>	<u>111</u>	<u>18.2%</u>
<u>Disagree</u>	<u>114</u>	<u>18.6%</u>
Somewhat disagree	53	8.8%
Strongly disagree	60	9.9%
Unsure	102	16.8%
Total	610	100.0%

Privatization of Liquor

18. Would you support or oppose the privatization of liquor sales in North Carolina?

	Freq.	%
<u>Support</u>	<u>270</u>	<u>44.2%</u>
Strongly support	160	26.3%
Somewhat support	109	17.9%
<u>Neither support nor oppose</u>	<u>97</u>	<u>16.0%</u>
<u>Oppose</u>	<u>131</u>	<u>21.5%</u>
Somewhat oppose	54	8.8%
Strongly oppose	77	12.6%
Unsure	112	18.4%
Total	610	100.0%



Now thinking about the issue of education...

Where Child Attends School

19. Who is best suited to determine where a child should attend school out of the following options?

	Freq.	%
The child's parents or guardians	457	74.9%
Local school boards	66	10.8%
The State Board of Education	40	6.5%
Unsure	48	7.8%
Total	610	100.0%

Voucher System

20. A school voucher system allows parents to send their child to the school of their choice, whether public or private, including religious and non-religious schools. If this policy were adopted, tax dollars currently allocated to a school district would be allocated to parents as a 'school voucher' to pay partial or full tuition for the child's school. In general, do you support the concept of a voucher system?

	Freq.	%
Support	313	51.3%
Strongly support	200	32.8%
Somewhat support	113	18.5%
Neither support nor oppose	59	9.7%
Oppose	189	30.9%
Somewhat oppose	67	11.0%
Strongly oppose	121	19.9%
Unsure	49	8.0%
Total	610	100.0%

Opportunity Scholarship Program

21. The North Carolina House of Representatives recently passed legislation removing income restrictions on the Opportunity Scholarship Program, a school voucher program. Under the new legislation, low-income students would still receive priority funding when determining eligibility. However, eligibility would be expanded to all families with the award size based on a sliding family income scale. Do you support or oppose legislation to expand the Opportunity Scholarship Program?

	Freq.	%
Support	316	51.8%
Strongly support	155	25.5%
Somewhat support	161	26.3%
Neither support nor oppose	93	15.3%
Oppose	136	22.2%



Somewhat oppose	59	9.8%
Strongly oppose	76	12.5%
Unsure	65	10.6%
Total	610	100.0%

Government Problems Relation

22. Some people think the government is trying to do too many things that should be left to individuals and businesses. Others think the government should do more to solve our country's problems. Which comes closer to your own view?

	Freq.	%
Government is trying to do too much	371	60.7%
Government should do more	161	26.5%
Unsure	78	12.8%
Total	610	100.0%

Government Values Relation

23. Some people think the government should promote traditional values in our society, and others think the government should not promote any particular set of values. Which is closer to your view?

	Freq.	%
Government should promote traditional values	231	37.9%
Government should not promote any values	290	47.6%
Unsure	89	14.5%
Total	610	100.0%

24. Are you female or male?

	Freq.	%
Female	336	55.0%
Male	274	45.0%
Total	610	100.0%

25. What age range do you fall within?

	Freq.	%
<u>Under 50</u>	<u>251</u>	<u>41.2%</u>
18 - 34	115	18.8%
35 - 49	136	22.3%
<u>50 and Over</u>	<u>359</u>	<u>58.8%</u>
50 - 64	173	28.3%
65 or older	186	30.6%
Total	610	100.0%



26. How are you registered to vote in North Carolina? You may consider yourself of a different party, but what does your voter registration card show?

	Freq.	%
Republican	198	32.4%
Democrat	214	35.1%
Unaffiliated or Independent	182	29.8%
Another party	6	1.0%
Unsure	10	1.7%
Total	610	100.0%

27. And thinking about your views toward politics and government, would you say you are...

	Freq.	%
<u>Conservative</u>	<u>257</u>	<u>42.2%</u>
Very conservative	130	21.2%
Somewhat conservative	128	21.0%
<u>Moderate</u>	<u>171</u>	<u>28.0%</u>
<u>Liberal</u>	<u>158</u>	<u>25.9%</u>
Somewhat liberal	90	14.7%
Very liberal	68	11.2%
Unsure	24	3.9%
Total	610	100.0%

28. Do you consider the area where you live to be more rural, suburban, or urban?

	Freq.	%
Rural	294	48.2%
Suburban	233	38.2%
Urban	83	13.6%
Total	610	100.0%

29. What annual household income range do you fall within out of the following options?

	Freq.	%
Less than \$50,000	159	26.0%
\$50,000 - \$100,000	193	31.6%
More than \$100,000	177	29.0%
Unsure / refused	82	13.4%
Total	610	100.0%

30. Which of the following best describes your race or ethnicity?

	Freq.	%
White or Caucasian	434	71.1%
Asian or Pacific Islander	6	1.1%
Black or African American	127	20.8%



Hispanic or Latino	19	3.1%
Other	16	2.6%
Unsure	8	1.3%
Total	610	100.0%

31. Thinking back, who did you vote for in the 2020 election for President?

	Freq.	%
Republican Donald Trump	286	46.9%
Democrat Joe Biden	279	45.7%
Another candidate	11	1.8%
Did not vote	23	3.8%
Unsure	11	1.9%
Total	610	100.0%

32. What's the highest level of education you have completed?

	Freq.	%
<u>No degree</u>	<u>342</u>	<u>56.1%</u>
Some high school	15	2.4%
High school diploma/GED	76	12.5%
Technical Certification	28	4.5%
Some college or Associates Degree	224	36.6%
<u>At least College</u>	<u>264</u>	<u>43.3%</u>
Four-year undergraduate or Bachelors Degree	135	22.2%
Graduate degree or further	129	21.1%
Unsure	4	0.6%
Total	610	100.0%

33. General Election X of 4

	Freq.	%
0 of 4	39	6.3%
1 of 4	89	14.5%
2 of 4	91	14.8%
3 of 4	105	17.3%
4 of 4	287	47.0%
Total	610	100.0%

34. Geo – Congressional Districts

	Freq.	%
1	55	9.0%
2	14	2.4%
3	37	6.1%
4	40	6.6%
5	63	10.3%



6	42	6.9%
7	52	8.5%
8	36	5.9%
9	68	11.2%
10	57	9.4%
11	50	8.2%
12	25	4.2%
13	33	5.4%
14	37	6.0%
Total	610	100.0%

35. Geo - DMAs

	Freq.	%
<u>Charlotte/West</u>	<u>220</u>	<u>36.0%</u>
Charlotte	167	27.4%
Green/Spart/Ash	50	8.2%
Chattanooga	2	0.3%
Atlanta	1	0.1%
<u>Central</u>	<u>114</u>	<u>18.7%</u>
Grsbro/Wnsal/Hpt	107	17.6%
Florence/Myrtle	7	1.2%
<u>Raleigh/Durham</u>	<u>188</u>	<u>30.9%</u>
<u>Coastal</u>	<u>87</u>	<u>14.3%</u>
Greenville-N.Bern-Washngtn	43	7.0%
Wilmington	34	5.5%
Norfolk-Portsmth-Newpt Nws	11	1.8%
Total	610	100.0%

36. Age + Income

	Freq.	%
<65 <\$50k	106	17.5%
<65 \$50k-\$100k	135	22.1%
<65 \$100k+	141	23.1%
65+ <\$50k	52	8.6%
65+ \$50k-\$100k	58	9.4%
65+ \$100k+	36	5.9%
Unsure	82	13.4%
Total	610	100.0%

37. Age + Gender

	Freq.	%
F 18 - 34	67	10.9%
F 35 - 49	77	12.6%
F 50 - 64	90	14.7%
F 65+	102	16.7%



M 18 - 34	48	7.9%
M 35 - 49	59	9.7%
M 50 - 64	83	13.6%
M 65+	84	13.8%
Total	610	100.0%

38. Race + Gender

	Freq.	%
White Female	233	38.1%
White Male	201	33.0%
Asian Female	1	0.2%
Asian Male	5	0.9%
Black Female	79	13.0%
Black Male	48	7.8%
Hispanic Female	10	1.6%
Hispanic Male	9	1.4%
Other Female	10	1.6%
Other Male	7	1.1%
Unsure	8	1.3%
Total	610	100.0%

39. Education + Gender

	Freq.	%
Female At least College	150	24.7%
Female No degree	183	30.0%
Male At least College	114	18.6%
Male No degree	159	26.1%
Unsure	4	0.6%
Total	610	100.0%

40. Partisanship + Age

	Freq.	%
Republican 18-34	20	3.3%
Republican 35-49	45	7.4%
Republican 50-64	64	10.4%
Republican 65+	69	11.3%
Democrat 18-34	42	6.9%
Democrat 35-49	44	7.2%
Democrat 50-64	58	9.5%
Democrat 65+	70	11.5%
Unaffiliated 18-34	50	8.2%
Unaffiliated 35-49	43	7.0%
Unaffiliated 50-64	45	7.4%
Unaffiliated 65+	44	7.2%
Another party 18-34	2	0.4%
Another party 35-49	1	0.2%
Another party 65+	3	0.4%
Unsure	10	1.7%
Total	610	100.0%



41. Partisanship + Gender

	Freq.	%
Republican Female	95	15.5%
Republican Male	103	16.9%
Democrat Female	133	21.9%
Democrat Male	81	13.2%
Unaffiliated Female	100	16.4%
Unaffiliated Male	82	13.5%
Another party Female	2	0.3%
Another party Male	4	0.7%
Unsure	10	1.7%
Total	610	100.0%

METHODOLOGY

This probabilistic survey was conducted May 21 – 23, 2023, with 610 likely general election voters. It has a margin of error of $\pm 3.96\%$. Known registered voters were interviewed via live calls, and SMS. This survey was weighted to a likely general election voter universe.

ABOUT THE FIRM

[Cygna1](#) is an award-winning international polling, public opinion, and predictive analytics firm that pioneered multi-mode polling, text-to-web collection, and emotive analysis. Cygna1 consistently ranks as the most accurate firm, and clients rely on Cygna1's ability to create intelligence for action. Its team members have worked in 48 states and multiple countries on more than 2,700 corporate, public affairs, and political campaigns.

