

CYGNAL

Survey of Likely General Election Voters

North Carolina Statewide

Conducted August 20 – 21, 2023

n=600 | $\pm 3.99\%$

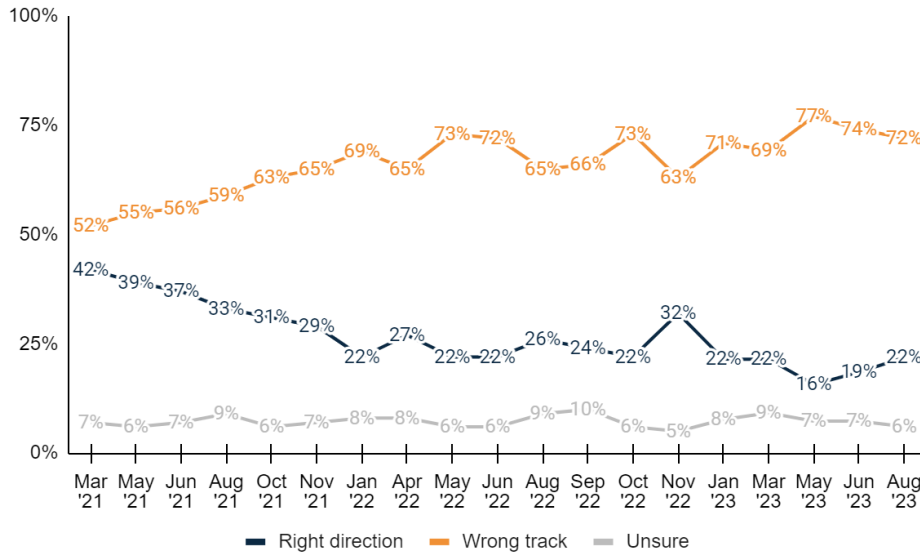
Vote Method

- How do you plan to vote in the 2024 general election for President, Congress, and state offices?

	Freq.	%	Jun '23	May '23	Mar '23	Jan '23
Vote in-person on Election Day	256	42.7%	44.9%	42.7%	39.3%	37.9%
Definitely vote in-person on Election Day	187	31.2%	33.3%	30.1%	27.9%	27.2%
Probably vote in-person on Election Day	69	11.5%	11.6%	12.6%	11.4%	10.7%
Vote absentee by mail	40	6.7%	9.3%	7.0%	9.0%	9.5%
Definitely vote absentee by mail	24	4.1%	4.9%	2.7%	3.5%	5.4%
Probably vote absentee by mail	16	2.7%	4.3%	4.3%	5.5%	4.1%
Vote early in-person	304	50.6%	45.9%	50.3%	51.7%	52.5%
Definitely vote early in-person	172	28.6%	25.8%	23.2%	29.9%	26.1%
Probably vote early in-person	132	22.0%	20.0%	27.1%	21.8%	26.5%
Total	600	100.0%	100.0%	100.0%	100.0%	100.0%

Country Direction

- Generally speaking, would you say things in the United States are headed in the right direction or off on the wrong track?



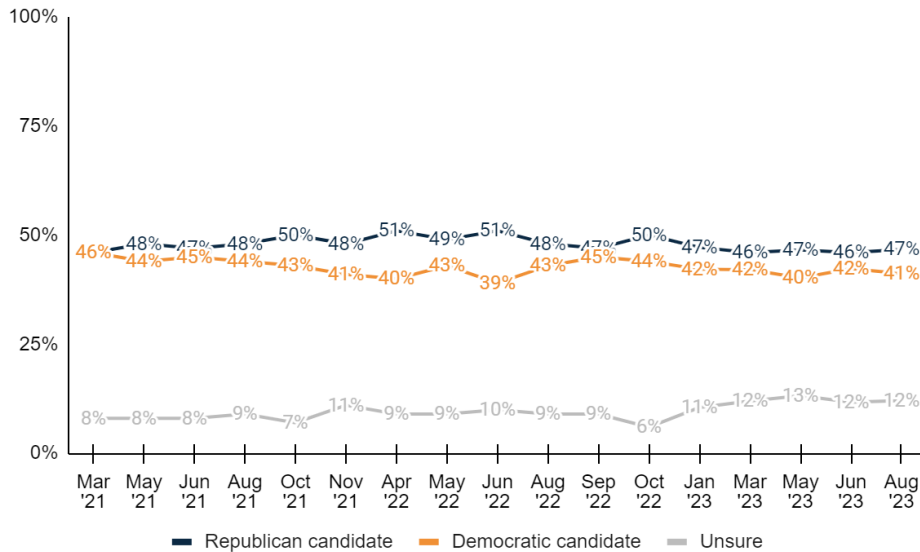
	Freq.	%	Jun '23	May '23	Mar '23	Jan '23
Right direction	131	21.9%	18.5%	15.7%	21.5%	21.5%
Definitely the right direction	33	5.6%	3.6%	3.0%	3.8%	3.5%
Mostly the right direction	98	16.3%	14.9%	12.8%	17.7%	18.0%
Wrong track	432	72.1%	74.1%	77.0%	69.3%	70.9%
Mostly the wrong track	125	20.8%	23.4%	19.6%	21.5%	20.1%
Definitely the wrong track	307	51.2%	50.7%	57.4%	47.8%	50.7%



Unsure	36	6.0%	7.3%	7.3%	9.2%	7.7%
Total	600	100.0%	100.0%	100.0%	100.0%	100.0%

Generic State Legislative Ballot

3. If the 2024 election was held today, and you had to make a choice, would you vote for the Republican or Democratic candidate for the North Carolina State Legislature?



	Freq.	%	Jun '23	May '23	Mar '23	Jan '23
Republican candidate	280	46.7%	46.0%	46.6%	46.0%	47.2%
Definitely the Republican candidate	231	38.5%	35.8%	36.8%	35.4%	37.1%
Probably the Republican candidate	49	8.2%	10.3%	9.8%	10.6%	10.2%
Democratic candidate	247	41.2%	42.3%	40.2%	42.1%	42.2%
Probably the Democratic candidate	56	9.4%	9.5%	8.9%	9.8%	8.2%
Definitely the Democratic candidate	191	31.8%	32.8%	31.3%	32.3%	34.1%
Unsure	73	12.1%	11.7%	13.2%	12.0%	10.5%
Total	600	100.0%	100.0%	100.0%	100.0%	100.0%

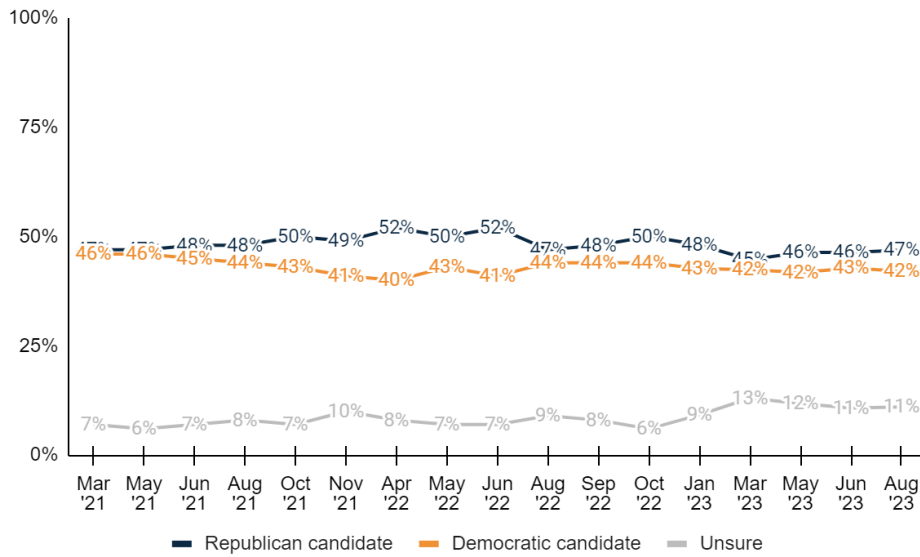
Generic Congress Ballot

4. And, regardless of how you would vote at the state level, if the 2024 election for United States Congress was held today, and you had to make a choice, would you vote for the Republican candidate or the Democratic candidate?

	Freq.	%	Jun '23	May '23	Mar '23	Jan '23
Republican candidate	281	46.9%	46.4%	46.4%	44.7%	48.1%
Definitely the Republican candidate	228	38.0%	36.5%	38.0%	34.4%	37.7%
Probably the Republican candidate	54	8.9%	9.9%	8.4%	10.3%	10.3%
Democratic candidate	252	42.1%	42.8%	41.8%	42.4%	42.7%
Probably the Democratic candidate	58	9.7%	8.9%	9.1%	10.1%	9.2%
Definitely the Democratic candidate	194	32.4%	34.0%	32.7%	32.3%	33.5%

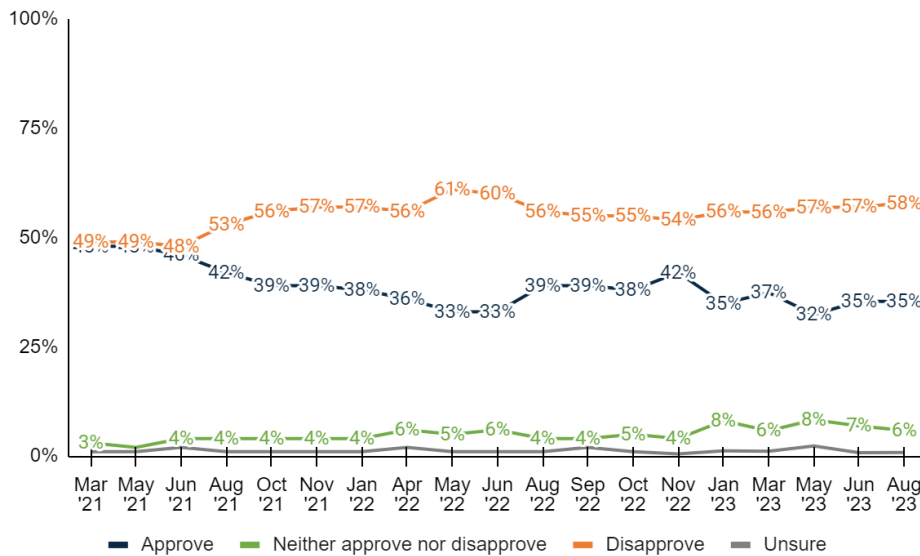


Unsure	66	11.0%	10.8%	11.8%	13.0%	9.2%
Total	600	100.0%	100.0%	100.0%	100.0%	100.0%



Biden Job Approval

5. Do you approve or disapprove of the job that Joe Biden is doing as President?



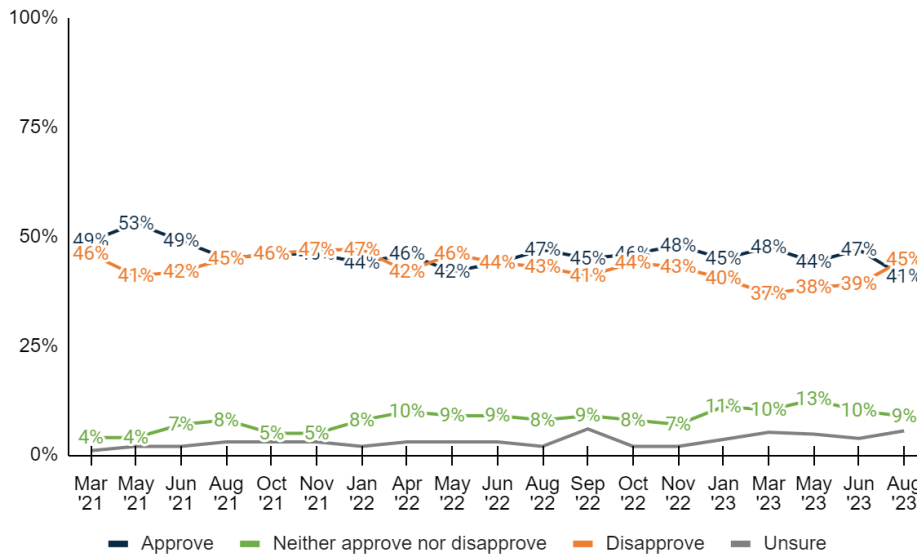
	Freq.	%	Jun '23	May '23	Mar '23	Jan '23
Approve	212	35.4%	35.4%	32.4%	37.4%	34.9%
Strongly approve	107	17.8%	15.9%	14.8%	15.4%	14.8%
Somewhat approve	106	17.6%	19.5%	17.6%	21.9%	20.1%



<u>Neither approve nor disapprove</u>	35	5.9%	6.9%	8.3%	5.8%	8.1%
<u>Disapprove</u>	347	57.9%	57.0%	56.9%	55.8%	55.9%
Somewhat disapprove	47	7.8%	7.3%	8.5%	6.7%	8.1%
Strongly disapprove	301	50.2%	49.7%	48.4%	49.1%	47.8%
Unsure	5	0.8%	0.8%	2.3%	1.1%	1.2%
Total	600	100.0%	100.0%	100.0%	100.0%	100.0%

Cooper Job Approval

6. Do you approve or disapprove of the job that Roy Cooper is doing as Governor?



	Freq.	%	Jun '23	May '23	Mar '23	Jan '23
<u>Approve</u>	245	40.8%	47.0%	44.2%	47.6%	44.9%
Strongly approve	154	25.7%	26.6%	27.4%	22.0%	26.2%
Somewhat approve	90	15.1%	20.4%	16.8%	25.5%	18.7%
<u>Neither approve nor disapprove</u>	53	8.9%	10.1%	12.7%	10.3%	11.1%
<u>Disapprove</u>	269	44.8%	39.1%	38.4%	36.9%	40.4%
Somewhat disapprove	94	15.7%	11.7%	12.5%	15.1%	18.7%
Strongly disapprove	174	29.1%	27.4%	25.9%	21.9%	21.7%
Unsure	33	5.5%	3.8%	4.8%	5.2%	3.6%
Total	600	100.0%	100.0%	100.0%	100.0%	100.0%



Thinking now about the 2024 presidential election...

Biden v DeSantis

7. Who would you like to see take the oath of office for president in 2024?

	Freq.	%
Joe Biden	108	18.0%
Donald Trump	176	29.3%
Another Republican	108	17.9%
Another Democrat	120	20.0%
Someone from another party	50	8.4%
Unsure	38	6.4%
Total	600	100.0%

8 – 13. For each of the following, please indicate if you have heard of the person and if you have, whether you have a favorable or unfavorable opinion of them. If you haven't heard of a name, choose so.

	Fav	Very Fav	Unfav	Very Unfav	No opinion	NHO	NET Fav
Josh Stein	<u>19.9%</u> <u>120</u>	11.0% 66	<u>12.0%</u> <u>72</u>	8.2% 49	20.6% 123	47.5% 285	7.9%
Mark Robinson	<u>26.5%</u> <u>159</u>	19.8% 119	<u>17.3%</u> <u>104</u>	13.8% 83	13.5% 81	42.7% 256	9.2%
Mark Walker	<u>11.0%</u> <u>66</u>	3.3% 20	<u>7.7%</u> <u>46</u>	4.3% 26	18.1% 109	63.2% 379	3.3%
Dale Folwell	<u>5.0%</u> <u>30</u>	1.4% 8	<u>5.4%</u> <u>32</u>	3.6% 22	16.6% 100	73.0% 438	-0.4%
Andy Wells	<u>2.9%</u> <u>17</u>	0.6% 4	<u>3.6%</u> <u>21</u>	2.5% 15	16.6% 100	77.0% 462	-0.7%
Jesse Thomas	<u>4.0%</u> <u>24</u>	1.2% 7	<u>3.3%</u> <u>20</u>	2.0% 12	13.9% 84	78.7% 472	0.7%

Thinking now about national issues...

Trump Indictment

14. As you may know, Donald Trump was indicted by the federal government in connection with the 2020 election. He's accused of trying to overturn election results. Do you think Trump did something illegal, something wrong but not illegal, or do you think he didn't do anything seriously wrong?

	Freq.	%
Trump did something illegal	284	47.3%
Trump did something wrong, but not illegal	71	11.9%
Trump didn't do anything seriously wrong	206	34.3%



Unsure	39	6.5%
Total	600	100.0%

DOJ Partisanship

15. Do you think the way the Department of Justice is treating Donald Trump is motivated by partisan politics, or not?

	Freq.	%
<u>Partisan</u>	<u>324</u>	<u>54.0%</u>
Definitely partisan	278	46.3%
Probably partisan	46	7.7%
<u>Nonpartisan</u>	<u>216</u>	<u>36.1%</u>
Probably nonpartisan	47	7.9%
Definitely nonpartisan	169	28.2%
Unsure	60	9.9%
Total	600	100.0%

Thinking now about the issues in North Carolina...

Legalize Casinos

16. Do you support or oppose the North Carolina General Assembly passing a law to legalize casinos and casino gambling in the state?

	Freq.	%
<u>Support</u>	<u>328</u>	<u>54.6%</u>
Strongly support	146	24.4%
Somewhat support	182	30.3%
<u>Oppose</u>	<u>192</u>	<u>32.1%</u>
Somewhat oppose	84	14.0%
Strongly oppose	108	18.0%
Unsure	80	13.3%
Total	600	100.0%

Legalize Casinos Effects

17. To what extent do you believe that legalizing casinos in North Carolina could help generate additional revenue for the state budget and potentially fund public services like education and healthcare?

	Freq.	%
<u>Believe</u>	<u>373</u>	<u>62.1%</u>
Strongly believe	143	23.8%
Somewhat believe	230	38.3%
<u>Disbelieve</u>	<u>168</u>	<u>28.1%</u>



Somewhat disbelieve	73	12.2%
Strongly disbelieve	95	15.9%
Unsure	59	9.8%
Total	600	100.0%

Legalize Casino Consequences

18. Are you worried about the potential social consequences of legalizing casinos, such as increased problem gambling and addiction?

	Freq.	%
<u>Yes</u>	<u>275</u>	<u>45.8%</u>
Yes, very worried	116	19.3%
Yes, somewhat worries	159	26.4%
<u>No</u>	<u>281</u>	<u>46.8%</u>
No, not very worried	162	26.9%
No, not at all worried	119	19.8%
Unsure	45	7.4%
Total	600	100.0%

Legalize Casinos Referendum

19. Would you support or oppose putting the decision to legalize casinos in North Carolina on a statewide referendum, allowing voters to directly decide the outcome?

	Freq.	%
<u>Support</u>	<u>454</u>	<u>75.7%</u>
Strongly support	294	49.0%
Somewhat support	161	26.8%
<u>Oppose</u>	<u>96</u>	<u>16.0%</u>
Somewhat oppose	51	8.5%
Strongly oppose	45	7.5%
Unsure	50	8.3%
Total	600	100.0%

Legalize Casinos Factors

20. Which factor do you think should take precedence in the decision to legalize casinos: the potential boost to the state's economy or concerns about the social and ethical implications of expanded gambling?

	Freq.	%
<u>Potential to boost the state's economy</u>	<u>295</u>	<u>49.2%</u>
Definitely the potential to boost the state's economy	153	25.5%



Probably the potential to boost the state's economy	143	23.8%
<u>Concerns about the social and ethical implications</u>	233	38.8%
Probably concerns about the social and ethical implications	102	17.0%
Definitely concerns about the social and ethical implications	131	21.8%
Unsure	71	11.9%
Total	600	100.0%

Turning now to the cost of living in North Carolina...

Price of Food Fluctuation

21. Compared to one year ago, has the price of the food you buy at the grocery store increased, decreased, or stayed about the same?

	Freq.	%
Price of food has increased	571	95.1%
Price of food has stayed the same	19	3.1%
Price of food has decreased	4	0.6%
Unsure	7	1.2%
Total	600	100.0%

Price Fluctuation Factors

22. In your opinion, what are the two most important factors contributing to fluctuations in food prices? Please select two options.

	Freq.	%
Climate change and extreme weather events	85	14.1%
Conflict in Ukraine	47	7.9%
Consumer demand	27	4.5%
Global economic conditions	191	31.8%
Government policies	263	43.9%
Supply chain disruptions	218	36.3%
Increased fuel and energy costs	367	61.1%
Unsure	1	0.2%
Total	600	100.0%



Government Addressing Fluctuations

23. How well do you believe the government is currently addressing issues related to American agriculture and food security?

	Freq.	%
<u>Well</u>	113	18.9%
Very well	19	3.2%
Somewhat well	94	15.7%
<u>Poorly</u>	441	73.6%
Somewhat poorly	126	21.0%
Very poorly	315	52.5%
Unsure	45	7.5%
Total	600	100.0%

Government Behind Prices

24. Please indicate if you agree or disagree with the following statement: government regulations have caused strain in the American food system, leading to higher food prices.

	Freq.	%
<u>Agree</u>	394	65.7%
Strongly agree	251	41.9%
Somewhat agree	143	23.8%
<u>Disagree</u>	158	26.4%
Somewhat disagree	84	14.0%
Strongly disagree	75	12.5%
Unsure	47	7.9%
Total	600	100.0%

Government Prioritize Agricultural Reform

25. Please indicate if you agree or disagree with the following statement: state and federal lawmakers should prioritize regulatory reform in the American agriculture sector to increase food security and supply.

	Freq.	%
<u>Agree</u>	436	72.7%
Strongly agree	230	38.4%
Somewhat agree	206	34.3%
<u>Disagree</u>	85	14.2%
Somewhat disagree	41	6.9%
Strongly disagree	44	7.3%
Unsure	78	13.1%
Total	600	100.0%



26. Are you female or male?

	Freq.	%
Female	330	55.0%
Male	270	45.0%
Total	600	100.0%

27. What age range do you fall within?

	Freq.	%
<u>Under 50</u>	<u>247</u>	<u>41.2%</u>
18 - 34	113	18.8%
35 - 49	134	22.3%
<u>50 and Over</u>	<u>353</u>	<u>58.8%</u>
50 - 64	170	28.3%
65 or older	183	30.6%
Total	600	100.0%

28. How are you registered to vote in North Carolina? You may consider yourself of a different party, but what does your voter registration card show?

	Freq.	%
Republican	195	32.4%
Democrat	210	35.0%
Independent/Other	184	30.7%
Unsure	11	1.9%
Total	600	100.0%

29. And thinking about your views toward politics and government, would you say you are...

	Freq.	%
<u>Conservative</u>	<u>275</u>	<u>45.8%</u>
Very conservative	126	21.0%
Somewhat conservative	149	24.8%
<u>Moderate</u>	<u>160</u>	<u>26.6%</u>
<u>Liberal</u>	<u>143</u>	<u>23.9%</u>
Somewhat liberal	78	13.0%
Very liberal	65	10.9%
Unsure	22	3.6%
Total	600	100.0%

30. Do you consider the area where you live to be more rural, suburban, or urban?

	Freq.	%
Rural	264	44.0%
Suburban	256	42.6%



Urban	80	13.4%
Total	600	100.0%

31. What annual household income range do you fall within out of the following options?

	Freq.	%
Less than \$40,000	100	16.6%
\$40,000 - \$69,999	133	22.1%
\$70,000 - \$99,999	124	20.7%
\$100,000 or more	198	32.9%
Unsure	46	7.6%
Total	600	100.0%

32. Which of the following best describes your race or ethnicity?

	Freq.	%
White or Caucasian	401	66.8%
Asian or Pacific Islander	7	1.1%
Black or African American	129	21.5%
Hispanic or Latino	21	3.4%
Other	31	5.1%
Unsure	13	2.1%
Total	600	100.0%

33. Thinking back, who did you vote for in the 2020 election for President?

	Freq.	%
Republican Donald Trump	281	46.9%
Democrat Joe Biden	275	45.9%
Another candidate	17	2.9%
Did not vote	19	3.1%
Unsure	7	1.2%
Total	600	100.0%

34. What's the highest level of education you have completed?

	Freq.	%
<u>No degree</u>	<u>334</u>	<u>55.6%</u>
Some high school	3	0.5%
High school diploma/GED	62	10.4%
Technical Certification	34	5.6%
Some college or Associate's Degree	234	39.0%
<u>At least College</u>	<u>260</u>	<u>43.3%</u>
Four-year undergraduate or Bachelor's Degree	136	22.6%
Graduate degree or further	124	20.7%
Unsure	7	1.1%
Total	600	100.0%



35. General Election X of 4

	Freq.	%
0 of 4	11	1.8%
1 of 4	85	14.2%
2 of 4	120	20.0%
3 of 4	102	17.0%
4 of 4	282	47.0%
Total	600	100.0%

36. Geo – Congressional District

	Freq.	%
1	51	8.5%
2	14	2.4%
3	43	7.2%
4	55	9.1%
5	53	8.8%
6	41	6.9%
7	48	8.0%
8	39	6.5%
9	57	9.5%
10	46	7.6%
11	47	7.8%
12	28	4.7%
13	30	5.0%
14	48	7.9%
Total	600	100.0%

37. Geo - DMA

	Freq.	%
<u>Charlotte/West</u>	<u>215</u>	<u>35.9%</u>
Charlotte	164	27.4%
Greenvll-Spart-Ashevll-And	49	8.2%
Chattanooga	2	0.3%
<u>Central</u>	<u>113</u>	<u>18.8%</u>
Greensboro-H.Point-W.Salem	106	17.6%
Myrtle Beach-Florence	7	1.2%
<u>Raleigh-Durham (Fayetvll)</u>	<u>186</u>	<u>30.9%</u>
<u>Coastal</u>	<u>86</u>	<u>14.3%</u>
Greenville-N.Bern-Washngtn	42	7.0%
Wilmington	33	5.5%
Norfolk-Portsmth-Newpt Nws	11	1.8%
Total	600	100.0%



38. Age + Income

	Freq.	%
<65 <\$40k	60	10.1%
<65 \$40k-\$70k	79	13.2%
<65 \$70k-\$100k	85	14.1%
<65 \$100k+	169	28.1%
65+ <\$40k	39	6.5%
65+ \$40k-\$70k	53	8.9%
65+ \$70k-\$100k	40	6.6%
65+ \$100k+	29	4.9%
Unsure	46	7.6%
Total	600	100.0%

39. Age + Gender

	Freq.	%
F 18 - 34	60	10.0%
F 35 - 49	73	12.1%
F 50 - 64	92	15.3%
F 65+	105	17.5%
M 18 - 34	53	8.8%
M 35 - 49	61	10.2%
M 50 - 64	78	13.0%
M 65+	78	13.0%
Total	600	100.0%

40. Race + Gender

	Freq.	%
White Female	225	37.5%
White Male	176	29.3%
Asian Female	3	0.5%
Asian Male	4	0.7%
Black Female	77	12.8%
Black Male	52	8.7%
Hispanic Female	9	1.5%
Hispanic Male	12	1.9%
Other Female	10	1.7%
Other Male	21	3.4%
Unsure	13	2.1%
Total	600	100.0%

41. Education + Gender

	Freq.	%
Female At least College	139	23.2%
Female No degree	188	31.3%
Male At least College	120	20.1%
Male No degree	146	24.3%



Unsure	7	1.1%
Total	600	100.0%

42. Partisanship + Age

	Freq.	%
Republican 18-34	28	4.7%
Republican 35-49	40	6.7%
Republican 50-64	61	10.1%
Republican 65+	65	10.9%
Democrat 18-34	38	6.3%
Democrat 35-49	44	7.3%
Democrat 50-64	57	9.5%
Democrat 65+	71	11.9%
Independent/Other 18-34	47	7.8%
Independent/Other 35-49	48	8.1%
Independent/Other 50-64	47	7.8%
Independent/Other 65+	42	7.0%
Unsure	11	1.9%
Total	600	100.0%

43. Partisanship + Gender

	Freq.	%
Republican Female	105	17.6%
Republican Male	89	14.9%
Democrat Female	134	22.3%
Democrat Male	76	12.7%
Independent/Other Female	81	13.6%
Independent/Other Male	103	17.1%
Unsure	11	1.9%
Total	600	100.0%

METHODOLOGY

This probabilistic survey was conducted August 20 – 21, 2023, with 600 likely general election voters. It has a margin of error of $\pm 3.99\%$. Known registered voters were interviewed via live calls and SMS. This survey was weighted to a likely general election voter universe.

ABOUT THE FIRM

[Cygna](#) is an award-winning international polling, public opinion, and predictive analytics firm that pioneered multi-mode polling, text-to-web collection, and emotive analysis. Cygna consistently ranks as the most accurate firm, and clients rely on Cygna's ability to create intelligence for action. Its team members have worked in 48 states and multiple countries on more than 2,700 corporate, public affairs, and political campaigns.

