

**CYGNAL**

**Survey of Likely General Election Voters**

North Carolina Statewide

*Conducted September 24 – 25, 2023*

n=600 |  $\pm 3.99\%$

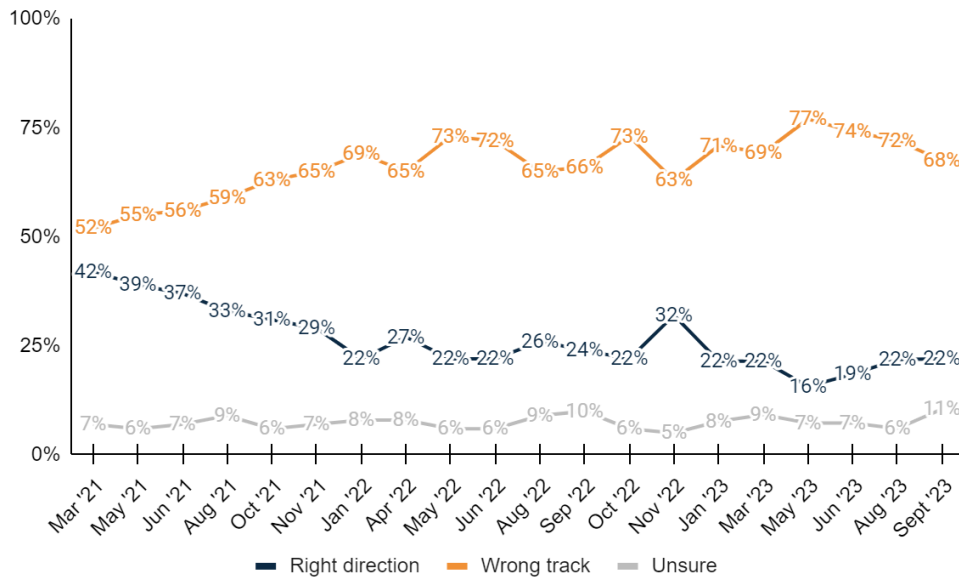
*Vote Method*

- How do you plan to vote in the 2024 general election for President, Congress, and state offices?

	Sep '23	Aug '23	Jun '23	May '23
<b><u>Vote in-person on Election Day</u></b>	<b><u>41.6%</u></b>	<b><u>42.7%</u></b>	<b><u>44.9%</u></b>	<b><u>42.7%</u></b>
Definitely vote in-person on Election Day	30.1%	31.2%	33.3%	30.1%
Probably vote in-person on Election Day	11.5%	11.5%	11.6%	12.6%
<b><u>Vote absentee by mail</u></b>	<b><u>7.0%</u></b>	<b><u>6.7%</u></b>	<b><u>9.3%</u></b>	<b><u>7.0%</u></b>
Definitely vote absentee by mail	2.6%	4.1%	4.9%	2.7%
Probably vote absentee by mail	4.4%	2.7%	4.3%	4.3%
<b><u>Vote early in-person</u></b>	<b><u>51.4%</u></b>	<b><u>50.6%</u></b>	<b><u>45.9%</u></b>	<b><u>50.3%</u></b>
Definitely vote early in-person	25.9%	28.6%	25.8%	23.2%
Probably vote early in-person	25.5%	22.0%	20.0%	27.1%
Total	100.0%	100.0%	100.0%	100.0%

*Country Direction*

- Generally speaking, would you say things in United States are headed in the right direction or off on the wrong track?

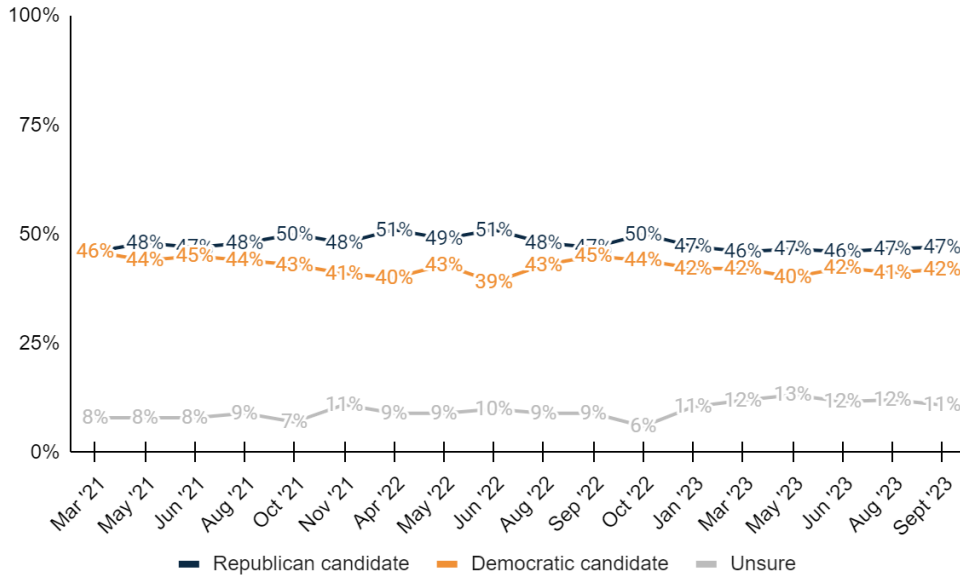


	Sep '23	Aug '23	Jun '23	May '23
<b><u>Right direction</u></b>	<b><u>22.0%</u></b>	<b><u>21.9%</u></b>	<b><u>18.5%</u></b>	<b><u>15.7%</u></b>
Definitely the right direction	4.2%	5.6%	3.6%	3.0%
Mostly the right direction	17.8%	16.3%	14.9%	12.8%
<b><u>Wrong track</u></b>	<b><u>67.5%</u></b>	<b><u>72.1%</u></b>	<b><u>74.1%</u></b>	<b><u>77.0%</u></b>
Mostly the wrong track	16.1%	20.8%	23.4%	19.6%
Definitely the wrong track	51.4%	51.2%	50.7%	57.4%
Unsure	10.5%	6.0%	7.3%	7.3%
Total	100.0%	100.0%	100.0%	100.0%



Generic State Legislature Ballot

3. If the 2024 election was held today, and you had to make a choice, would you vote for the Republican or Democratic candidate for the North Carolina State Legislature?



	Sep '23	Aug '23	Jun '23	May '23
<b>Republican candidate</b>	<b>47.1%</b>	<b>46.7%</b>	<b>46.0%</b>	<b>46.6%</b>
Definitely the Republican candidate	39.0%	38.5%	35.8%	36.8%
Probably the Republican candidate	8.2%	8.2%	10.3%	9.8%
<b>Democratic candidate</b>	<b>42.0%</b>	<b>41.2%</b>	<b>42.3%</b>	<b>40.2%</b>
Probably the Democratic candidate	9.9%	9.4%	9.5%	8.9%
Definitely the Democratic candidate	32.1%	31.8%	32.8%	31.3%
Unsure	10.9%	12.1%	11.7%	13.2%
Total	100.0%	100.0%	100.0%	100.0%

Generic Supreme Court Ballot

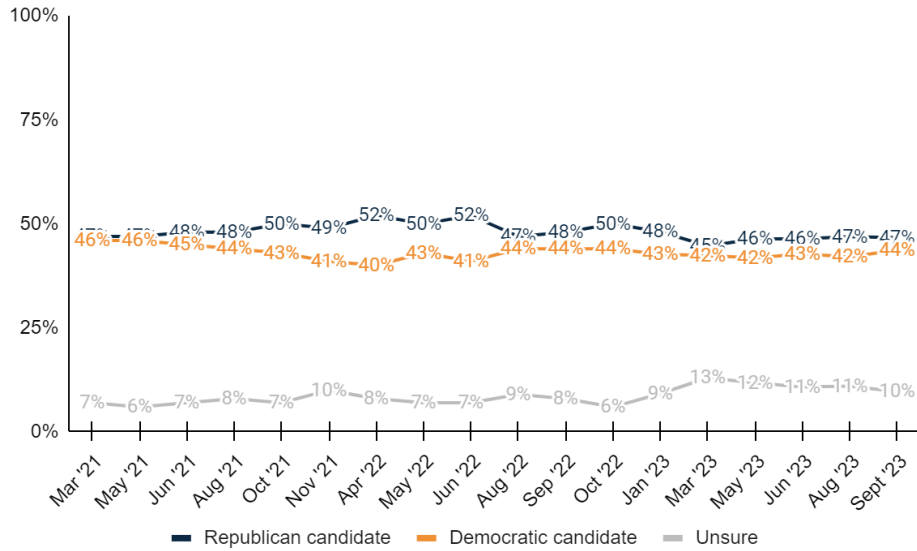
4. If the 2024 election was held today, and you had to make a choice, would you vote for the Republican or Democratic candidate for the North Carolina Supreme Court?

	Freq.	%
<b>Republican candidate</b>	<b>274</b>	<b>45.6%</b>
Definitely the Republican candidate	228	38.0%
Probably the Republican candidate	46	7.6%
<b>Democratic candidate</b>	<b>263</b>	<b>43.9%</b>
Probably the Democratic candidate	56	9.4%
Definitely the Democratic candidate	207	34.5%
Unsure	63	10.5%
Total	600	100.0%



Generic Congress Ballot

5. And, regardless of how you would vote at the state level, if the 2024 election for United States Congress was held today, and you had to make a choice, would you vote for the Republican candidate or the Democratic candidate?



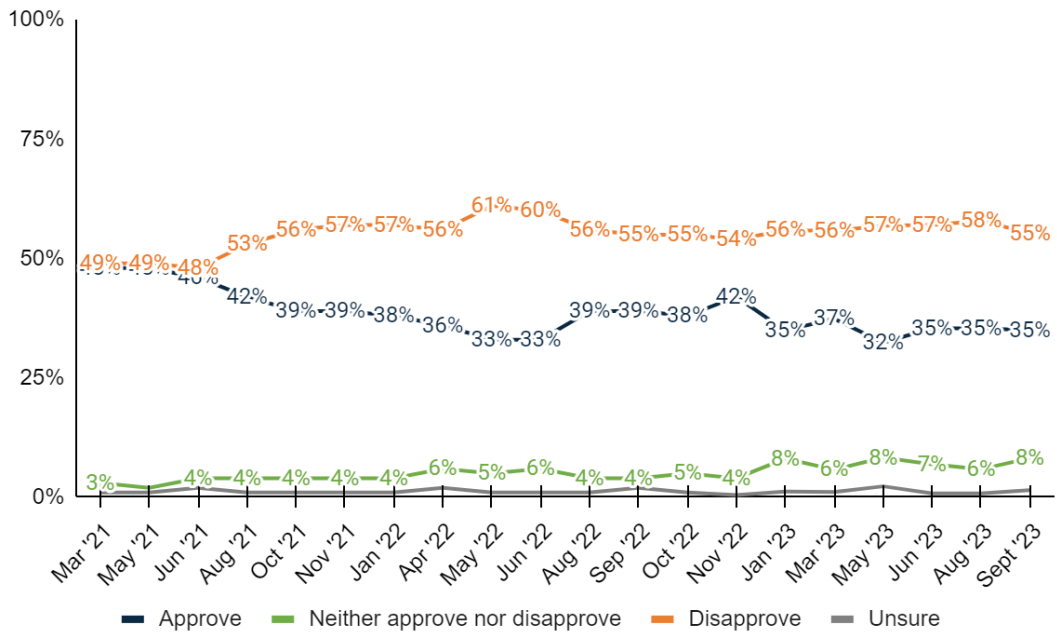
	Sep '23	Aug '23	Jun '23	May '23
<b>Republican candidate</b>	<b>46.7%</b>	<b>46.9%</b>	<b>46.4%</b>	<b>46.4%</b>
Definitely the Republican candidate	37.9%	38.0%	36.5%	38.0%
Probably the Republican candidate	8.8%	8.9%	9.9%	8.4%
<b>Democratic candidate</b>	<b>43.7%</b>	<b>42.1%</b>	<b>42.8%</b>	<b>41.8%</b>
Probably the Democratic candidate	8.9%	9.7%	8.9%	9.1%
Definitely the Democratic candidate	34.7%	32.4%	34.0%	32.7%
Unsure	9.7%	11.0%	10.8%	11.8%
Total	100.0%	100.0%	100.0%	100.0%

Biden Job Approval

6. Do you approve or disapprove of the job that Joe Biden is doing as President?

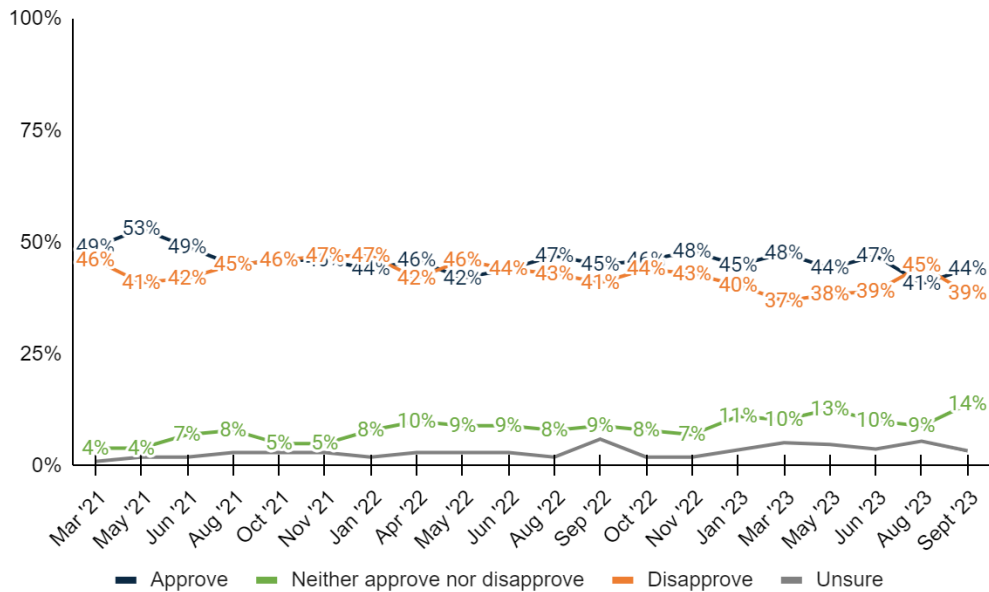
	Sep '23	Aug '23	Jun '23	May '23
<b>Approve</b>	<b>35.0%</b>	<b>35.4%</b>	<b>35.4%</b>	<b>32.4%</b>
Strongly approve	15.4%	17.8%	15.9%	14.8%
Somewhat approve	19.6%	17.6%	19.5%	17.6%
<b>Neither approve nor disapprove</b>	<b>8.2%</b>	<b>5.9%</b>	<b>6.9%</b>	<b>8.3%</b>
<b>Disapprove</b>	<b>55.3%</b>	<b>57.9%</b>	<b>57.0%</b>	<b>56.9%</b>
Somewhat disapprove	7.0%	7.8%	7.3%	8.5%
Strongly disapprove	48.3%	50.2%	49.7%	48.4%
Unsure	1.5%	0.8%	0.8%	2.3%
Total	100.0%	100.0%	100.0%	100.0%





*Cooper Job Approval*

7. Do you approve or disapprove of the job that Roy Cooper is doing as Governor?



	Sep '23	Aug '23	Jun '23	May '23
<b>Approve</b>	<b>44.1%</b>	<b>40.8%</b>	<b>47.0%</b>	<b>44.2%</b>
Strongly approve	26.6%	25.7%	26.6%	27.4%
Somewhat approve	17.5%	15.1%	20.4%	16.8%
<b>Neither approve nor disapprove</b>	<b>13.8%</b>	<b>8.9%</b>	<b>10.1%</b>	<b>12.7%</b>
<b>Disapprove</b>	<b>38.6%</b>	<b>44.8%</b>	<b>39.1%</b>	<b>38.4%</b>
Somewhat disapprove	13.6%	15.7%	11.7%	12.5%



Strongly disapprove	25.0%	29.1%	27.4%	25.9%
Unsure	3.4%	5.5%	3.8%	4.8%
Total	100.0%	100.0%	100.0%	100.0%

*State Democrats Image*

8. Do you have a favorable or unfavorable opinion of Democrats in the North Carolina State Legislature?

	Freq.	%
<b><u>Favorable</u></b>	<b><u>226</u></b>	<b><u>37.6%</u></b>
Very favorable	82	13.7%
Somewhat favorable	144	23.9%
<b><u>Unfavorable</u></b>	<b><u>265</u></b>	<b><u>44.2%</u></b>
Somewhat unfavorable	86	14.4%
Very unfavorable	179	29.8%
No opinion	101	16.9%
Never heard of	8	1.3%
Total	600	100.0%

*State Republicans Image*

9. Do you have a favorable or unfavorable opinion of Republicans in the North Carolina State Legislature?

	Freq.	%
<b><u>Favorable</u></b>	<b><u>230</u></b>	<b><u>38.3%</u></b>
Very favorable	89	14.9%
Somewhat favorable	140	23.4%
<b><u>Unfavorable</u></b>	<b><u>273</u></b>	<b><u>45.5%</u></b>
Somewhat unfavorable	90	15.1%
Very unfavorable	182	30.4%
No opinion	90	15.0%
Never heard of	8	1.3%
Total	600	100.0%

Thinking now about how candidates for office and officials are elected...

*Term Limits S/O*

10. Would you support or oppose term limits for the leaders of the North Carolina General Assembly, including the Speaker of the House of Representatives and the President Pro Tempore of the state Senate?

	Freq.	%
<b><u>Support</u></b>	<b><u>510</u></b>	<b><u>85.0%</u></b>
Strongly support	398	66.3%
Somewhat support	112	18.7%



<b>Oppose</b>	<b>30</b>	<b>4.9%</b>
Somewhat oppose	21	3.4%
Strongly oppose	9	1.5%
Undecided	60	10.0%
Total	600	100.0%

*Term Limits Max*

11. How many terms do you think should be the maximum limit for the Speaker of the House of Representatives in the state House and the President Pro Tempore of the state Senate?

	<b>Freq.</b>	<b>%</b>
No term limits	5	0.9%
One term (two years)	52	8.6%
Two terms (four years)	283	47.1%
Three terms (six years)	110	18.4%
Four terms (eight years)	111	18.5%
Unsure	39	6.5%
Total	600	100.0%

Switching gears to stories you may have seen or read about in the news...

*Hunter Investigation Awareness*

12. Were you previously aware that Hunter Biden has been under investigation for potential crimes related to his taxes, lobbying activities, possible money laundering, and other matters?

	<b>Freq.</b>	<b>%</b>
Yes, I was previously aware	549	91.5%
No, I was not already aware	41	6.9%
Undecided	10	1.6%
Total	600	100.0%

*Biden Involvement*

13. Based on what you have heard or read, do you think Joe Biden did or did not have involvement in his son Hunter Biden's business dealings in Ukraine and China while serving as Vice President?

	<b>Freq.</b>	<b>%</b>
<b>Yes</b>	<b>314</b>	<b>52.4%</b>
Definitely yes, Joe Biden was involved	237	39.5%
Probably yes, Joe Biden was involved	78	13.0%
<b>No</b>	<b>208</b>	<b>34.6%</b>
Probably no, Joe Biden was not involved	108	18.1%
Definitely no, Joe Biden was not involved	99	16.5%



Undecided	78	13.0%
Total	600	100.0%

*Biden Appropriate*

14. Given what you know about the Hunter Biden investigation, do you think President Joe Biden has acted appropriately or inappropriately regarding the investigation into Hunter Biden?

	Freq.	%
<b><u>Appropriately</u></b>	<b><u>221</u></b>	<b><u>36.9%</u></b>
Very appropriately	150	25.0%
Somewhat appropriately	71	11.9%
<b><u>Inappropriately</u></b>	<b><u>295</u></b>	<b><u>49.2%</u></b>
Somewhat inappropriately	58	9.7%
Very inappropriately	237	39.5%
Undecided	84	14.0%
Total	600	100.0%

Turning now to thinking about your local community...

*Safety Concern*

15. How concerned are you about crime and safety in your neighborhood?

	Freq.	%
<b><u>Concerned</u></b>	<b><u>397</u></b>	<b><u>66.2%</u></b>
Very concerned	203	33.9%
Somewhat concerned	194	32.3%
<b><u>Not concerned</u></b>	<b><u>199</u></b>	<b><u>33.2%</u></b>
Not too concerned	144	24.0%
Not at all concerned	55	9.2%
Undecided	4	0.7%
Total	600	100.0%

*Public Safety Priority*

16. Which of the following issues related to public safety do you consider the most pressing in your area? You can choose as many as three options.

	Freq.	%
Violent crime	210	35.0%
Property crime	241	40.1%
Drug-related issues	323	53.8%
Gang activity	111	18.6%
Police-community relations	147	24.5%
Cybersecurity threats	129	21.5%





Traffic safety	196	32.6%
Unsure	25	4.2%
Total	600	100.0%

*Law Enforcement Performance*

17. How would you rate the performance of local law enforcement agencies in ensuring public safety?

	Freq.	%
Excellent	81	13.6%
Good	259	43.2%
Fair	146	24.4%
Poor	63	10.4%
No opinion	32	5.4%
Unsure	18	3.1%
Total	600	100.0%

18. Are you female or male?

	Freq.	%
Female	330	55.0%
Male	270	45.0%
Total	600	100.0%

19. What age range do you fall within?

	Freq.	%
<b><u>Under 50</u></b>	<b><u>247</u></b>	<b><u>41.2%</u></b>
18 - 34	113	18.8%
35 - 49	134	22.3%
<b><u>50 and Over</u></b>	<b><u>353</u></b>	<b><u>58.8%</u></b>
50 - 64	170	28.3%
65 or older	183	30.6%
Total	600	100.0%

20. How are you registered to vote in North Carolina? You may consider yourself of a different party, but what does your voter registration card show?

	Freq.	%
Republican	195	32.5%
Democrat	210	35.0%
Independent/Other	179	29.9%
Unsure	16	2.6%
Total	600	100.0%

21. And thinking about your views toward politics and government, would you say you are...

	Freq.	%
<b><u>Conservative</u></b>	<b><u>265</u></b>	<b><u>44.2%</u></b>



Very conservative	121	20.2%
Somewhat conservative	144	24.0%
<b><u>Moderate</u></b>	<b><u>160</u></b>	<b><u>26.7%</u></b>
<b><u>Liberal</u></b>	<b><u>149</u></b>	<b><u>24.9%</u></b>
Somewhat liberal	94	15.7%
Very liberal	55	9.2%
Unsure	25	4.2%
Total	600	100.0%

22. Do you consider the area where you live to be more rural, suburban, or urban?

	<b>Freq.</b>	<b>%</b>
Rural	248	41.3%
Suburban	275	45.9%
Urban	77	12.8%
Total	600	100.0%

23. What annual household income range do you fall within out of the following options?

	<b>Freq.</b>	<b>%</b>
Less than \$40,000	85	14.1%
\$40,000 - \$69,999	129	21.5%
\$70,000 - \$99,999	108	17.9%
\$100,000 or more	214	35.7%
Unsure	64	10.7%
Total	600	100.0%

24. Which of the following best describes your race or ethnicity?

	<b>Freq.</b>	<b>%</b>
White or Caucasian	416	69.3%
Asian or Pacific Islander	6	1.0%
Black or African American	129	21.5%
Hispanic or Latino	18	3.1%
Other	18	3.0%
Unsure	13	2.1%
Total	600	100.0%

25. Thinking back, who did you vote for in the 2020 election for President?

	<b>Freq.</b>	<b>%</b>
Republican Donald Trump	281	46.9%
Democrat Joe Biden	275	45.9%
Another candidate	12	2.0%
Did not vote	19	3.1%
Unsure	12	2.1%
Total	600	100.0%



26. What's the highest level of education you have completed?

	Freq.	%
<b><u>No degree</u></b>	<b><u>333</u></b>	<b><u>55.5%</u></b>
Some high school	6	1.0%
High school diploma/GED	72	12.1%
Technical Certification	35	5.8%
Some college or Associate's Degree	220	36.7%
<b><u>At least College</u></b>	<b><u>260</u></b>	<b><u>43.3%</u></b>
Four-year undergraduate or Bachelor's Degree	149	24.9%
Graduate degree or further	111	18.4%
Unsure	7	1.2%
Total	600	100.0%

27. General Election X of 4

	Freq.	%
0 of 4	17	2.8%
1 of 4	83	13.9%
2 of 4	112	18.7%
3 of 4	105	17.6%
4 of 4	282	47.0%
Total	600	100.0%

28. Geo - Congressional District

	Freq.	%
1	46	7.6%
2	18	3.0%
3	42	7.0%
4	45	7.6%
5	45	7.5%
6	47	7.9%
7	49	8.1%
8	43	7.2%
9	60	9.9%
10	50	8.4%
11	49	8.1%
12	33	5.5%
13	33	5.6%
14	39	6.6%
Total	600	100.0%

29. Geo - DMA

	Freq.	%
<b><u>Charlotte/West</u></b>	<b><u>215</u></b>	<b><u>35.9%</u></b>
Charlotte	164	27.4%



Greenvll-Spart-Ashevll-And Chattanooga	49 2	8.2% 0.3%
<b><u>Central</u></b>	<b><u>113</u></b>	<b><u>18.8%</u></b>
Greensboro-H.Point-W.Salem Myrtle Beach-Florence	106 7	17.6% 1.2%
<b><u>Raleigh-Durham (Fayetvll)</u></b>	<b><u>186</u></b>	<b><u>31.0%</u></b>
<b><u>Coastal</u></b>	<b><u>86</u></b>	<b><u>14.3%</u></b>
Greenville-N.Bern-Washngtn Wilmington Norfolk-Portsmth-Newpt Nws Total	42 33 11 600	7.0% 5.5% 1.8% 100.0%

### 30. Age + Income

	<b>Freq.</b>	<b>%</b>
<65 <\$40k	59	9.9%
<65 \$40k-\$70k	82	13.7%
<65 \$70k-\$100k	77	12.9%
<65 \$100k+	162	27.0%
65+ <\$40k	25	4.2%
65+ \$40k-\$70k	47	7.8%
65+ \$70k-\$100k	30	5.0%
65+ \$100k+	52	8.7%
Unsure	64	10.7%
Total	600	100.0%

### 31. Age + Gender

	<b>Freq.</b>	<b>%</b>
F 18 - 34	56	9.4%
F 35 - 49	75	12.5%
F 50 - 64	93	15.4%
F 65+	106	17.7%
M 18 - 34	57	9.4%
M 35 - 49	59	9.9%
M 50 - 64	77	12.9%
M 65+	77	12.9%
Total	600	100.0%

### 32. Race + Gender

	<b>Freq.</b>	<b>%</b>
White Female	230	38.3%
White Male	186	31.1%
Asian Female	2	0.4%
Asian Male	4	0.6%
Black Female	78	12.9%



Black Male	51	8.6%
Hispanic Female	7	1.1%
Hispanic Male	12	1.9%
Other Female	10	1.7%
Other Male	8	1.3%
Unsure	13	2.1%
Total	600	100.0%

### 33. Education + Gender

	Freq.	%
Female At least College	147	24.5%
Female No degree	180	30.0%
Male At least College	113	18.8%
Male No degree	153	25.5%
Unsure	7	1.2%
Total	600	100.0%

### 34. Partisanship + Age

	Freq.	%
Republican 18-34	31	5.1%
Republican 35-49	36	6.0%
Republican 50-64	60	10.0%
Republican 65+	68	11.4%
Democrat 18-34	31	5.2%
Democrat 35-49	49	8.2%
Democrat 50-64	53	8.9%
Democrat 65+	76	12.7%
Independent/Other 18-34	48	7.9%
Independent/Other 35-49	46	7.7%
Independent/Other 50-64	50	8.3%
Independent/Other 65+	36	6.0%
Unsure	16	2.6%
Total	600	100.0%

### 35. Partisanship + Gender

	Freq.	%
Republican Female	104	17.3%
Republican Male	91	15.2%
Democrat Female	133	22.2%
Democrat Male	77	12.9%
Independent/Other Female	86	14.3%
Independent/Other Male	93	15.6%
Unsure	16	2.6%
Total	600	100.0%



## **METHODOLOGY**

This probabilistic survey was conducted September 24 – 25, 2023, with 600 likely general election voters. It has a margin of error of  $\pm 3.99\%$ . Known registered voters were interviewed via live phones and SMS. This survey was weighted to a likely general election voter universe.

## **ABOUT THE FIRM**

[Cygnal](#) is an award-winning international polling, public opinion, and predictive analytics firm that pioneered multi-mode polling, text-to-web collection, and emotive analysis. Cygnal consistently ranks as the most accurate firm, and clients rely on Cygnal's ability to create intelligence for action. Its team members have worked in 48 states and multiple countries on more than 2,700 corporate, public affairs, and political campaigns.

